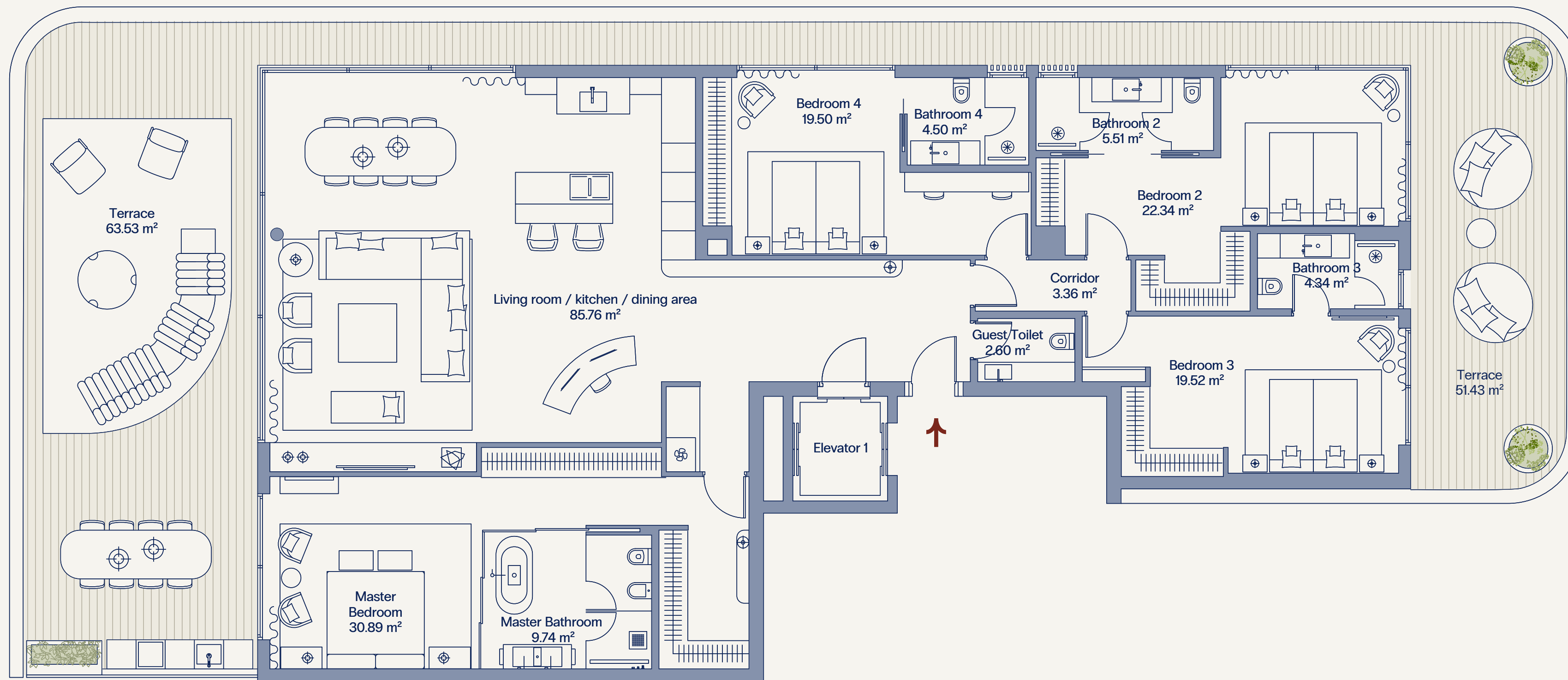


SEA VIEW



MOUNTAIN VIEW

USABLE AREA

208,06 sq m
Indoor area

114,96 sq m
Covered terrace

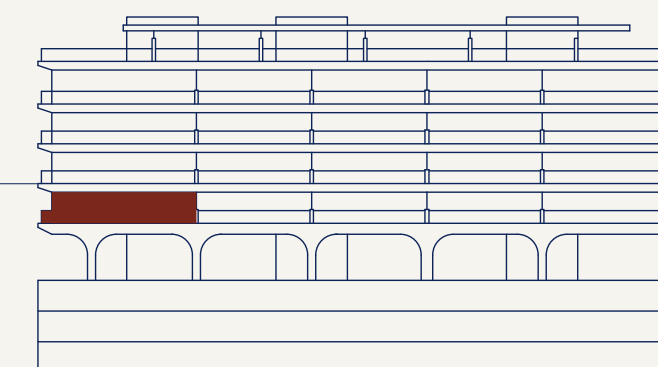
BUILT AREA

230,07 sq m
Indoor area

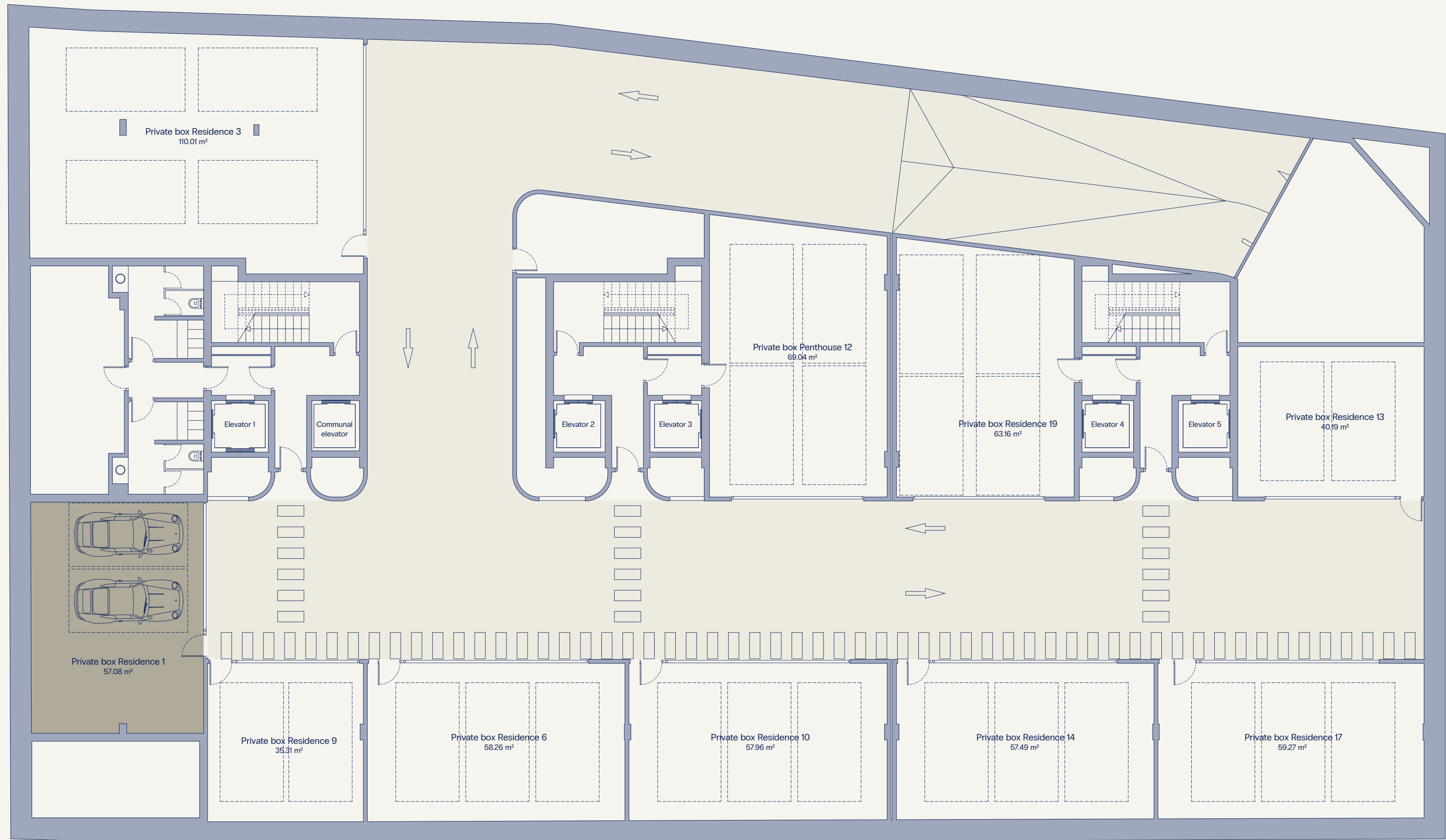
133,27 sq m
Covered terrace

Usable area: 228,87 sqm (according to Decree 218/2005)

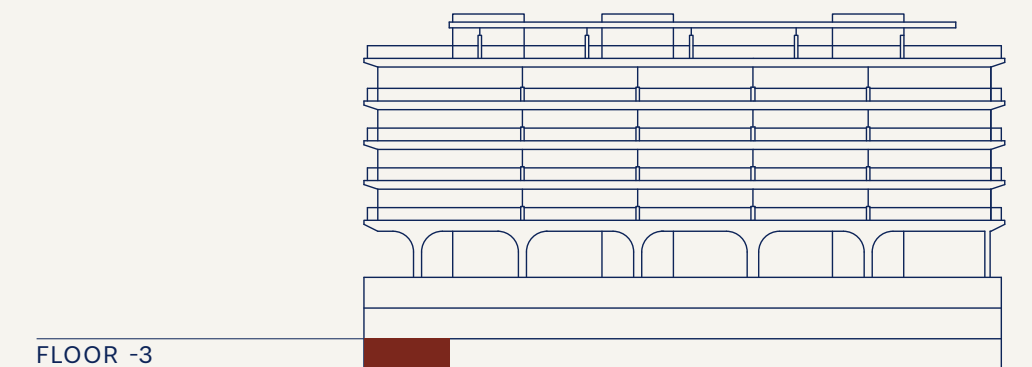
1ST FLOOR



MOUNTAIN VIEW



SEA VIEW



FLOOR -3