



Storage
11.66 m²

Service Bathroom
4.36 m²

Laundry
14.81 m²

Winery
2.68 m²

Hall
30.77 m²

Lift

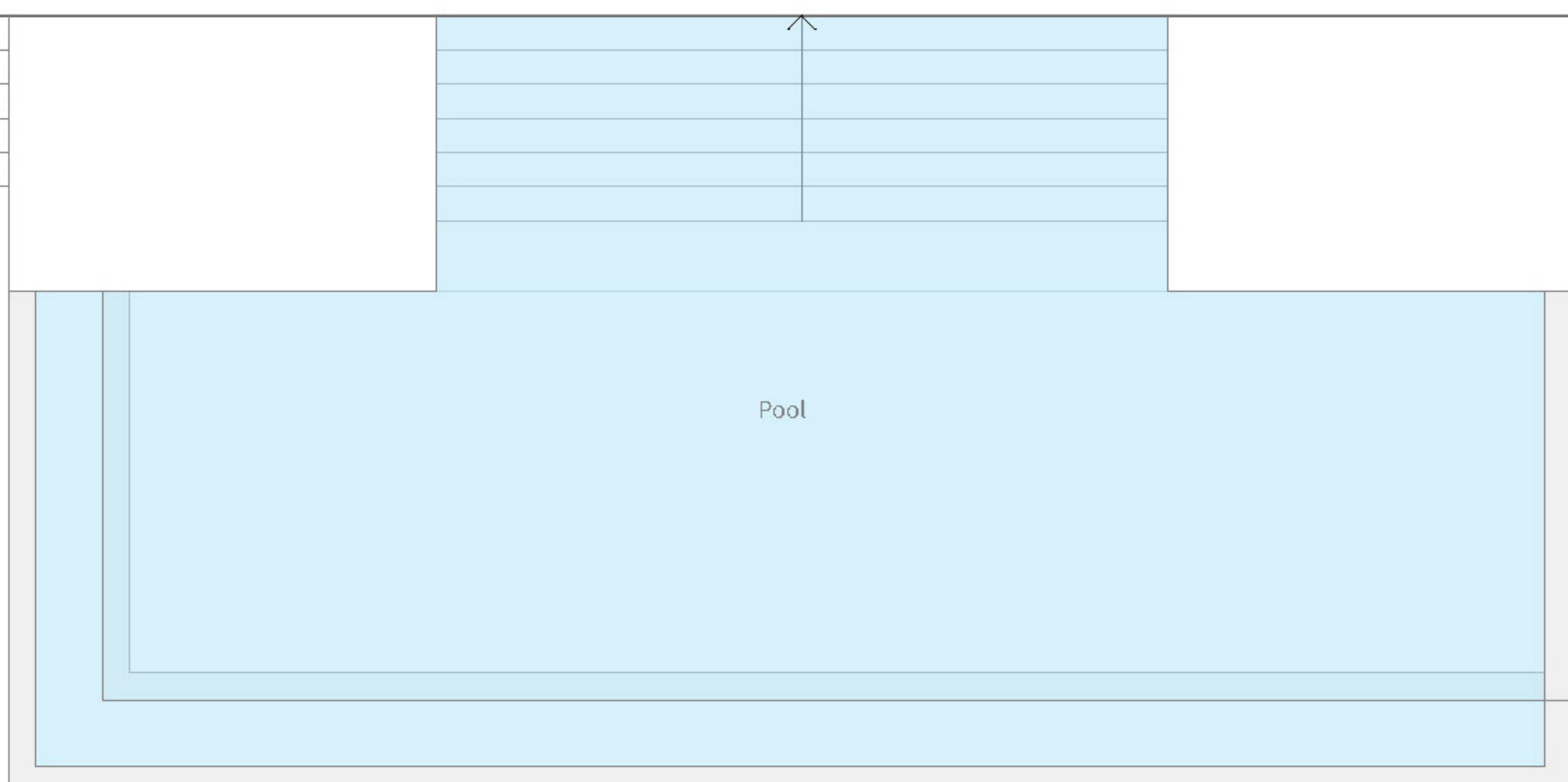
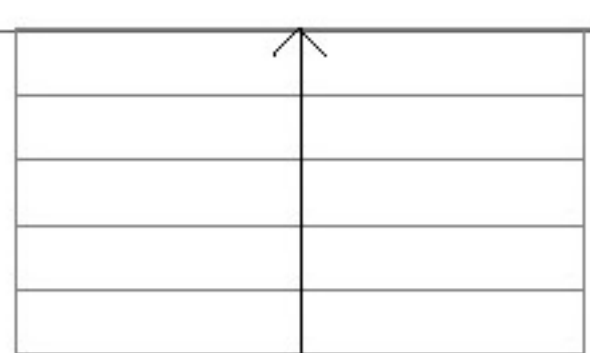
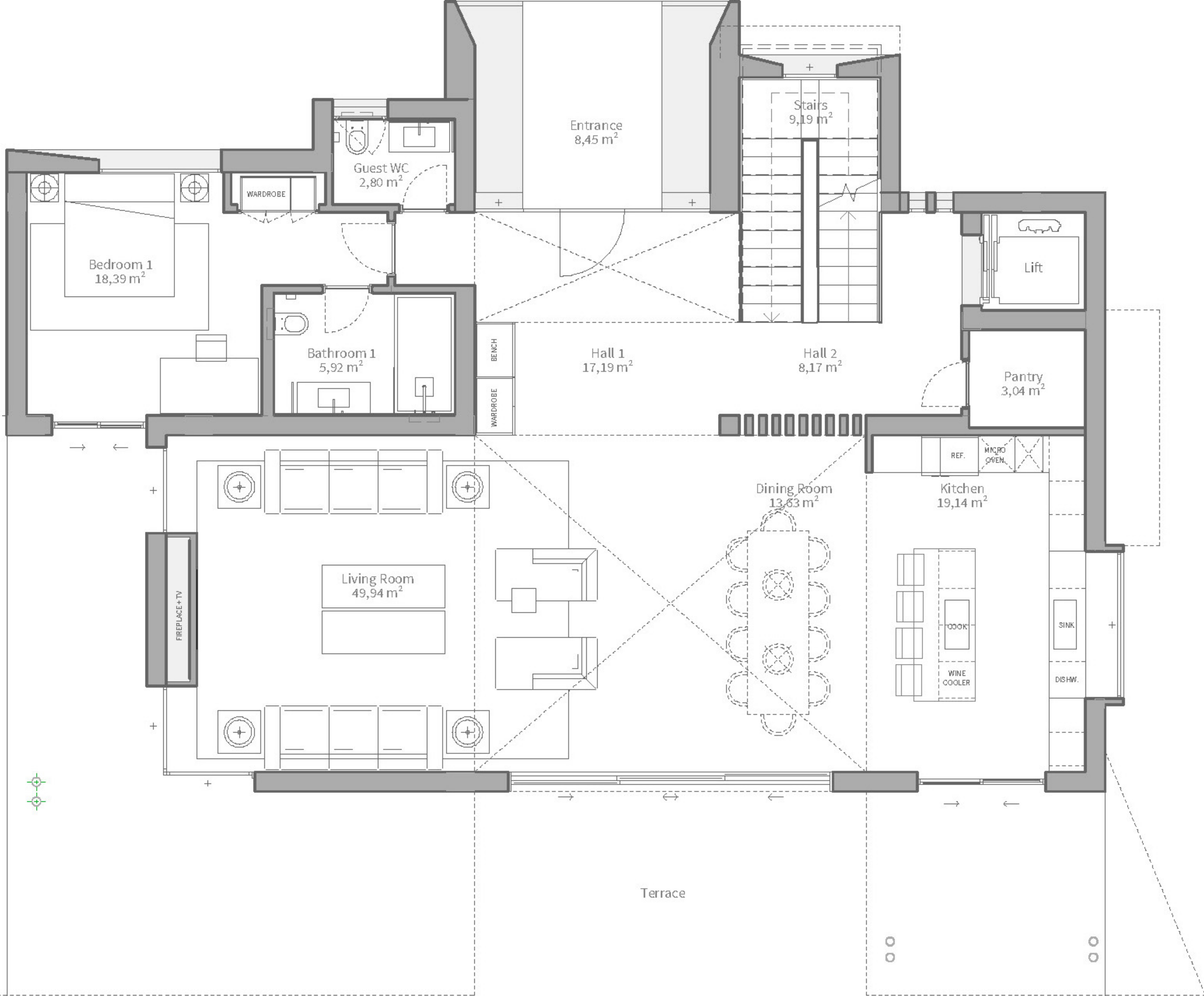
Pantry
2.66 m²

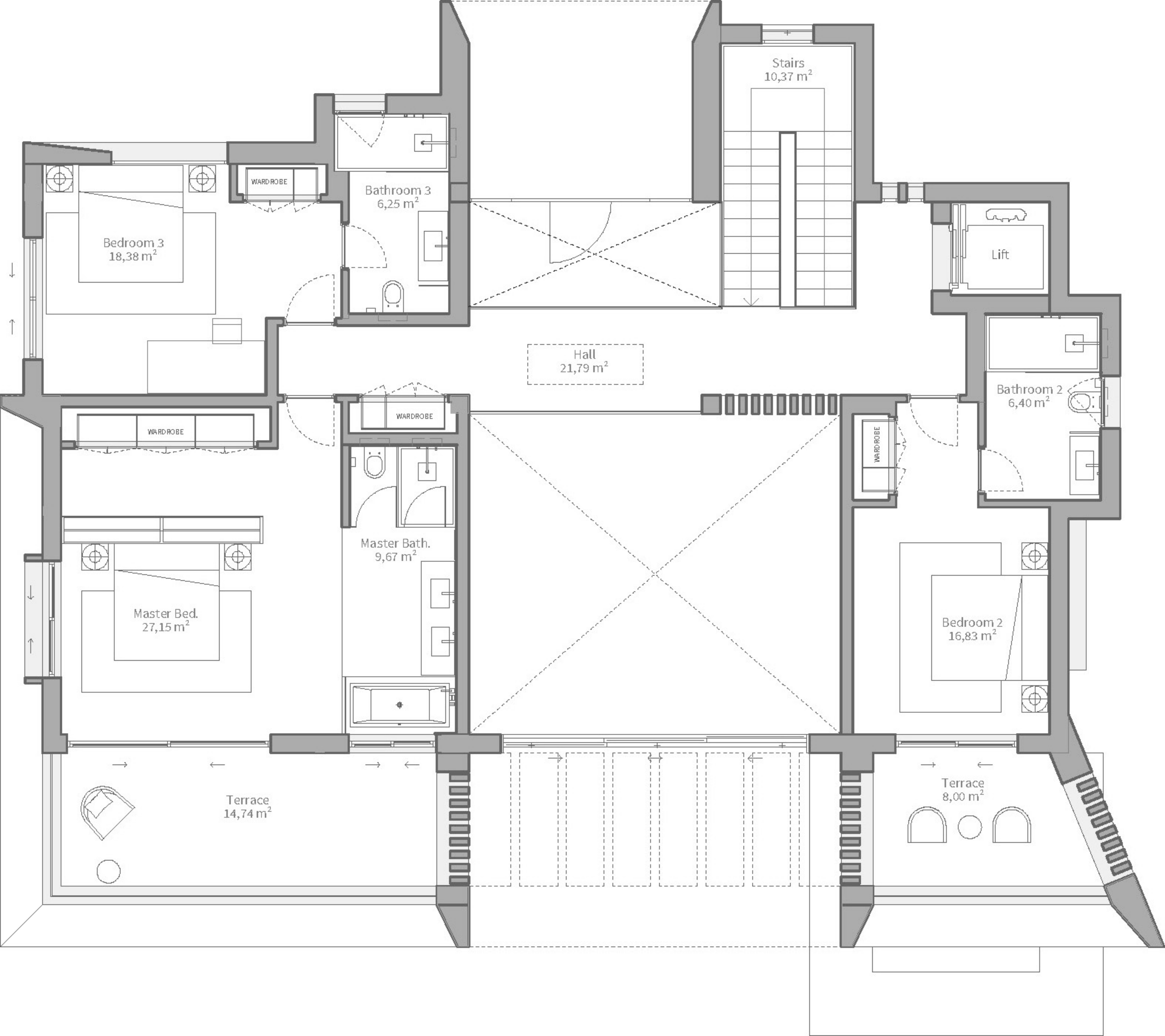
Multi purpose room
65.38 m²

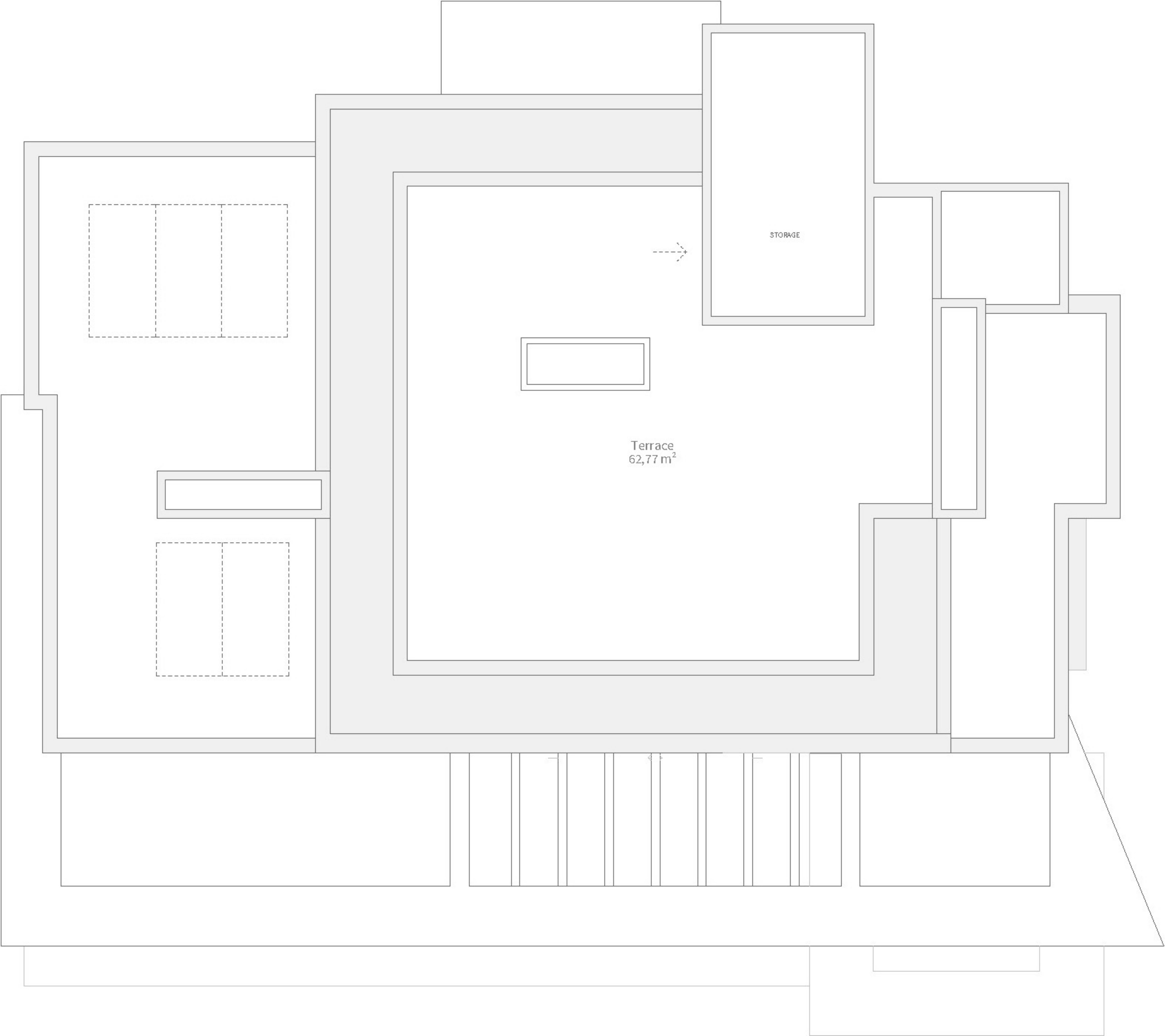
Parking
80.70 m²

Storage
10.85 m²

Tech. Room
23.70 m²







STORAGE

Terrace
62,77 m²