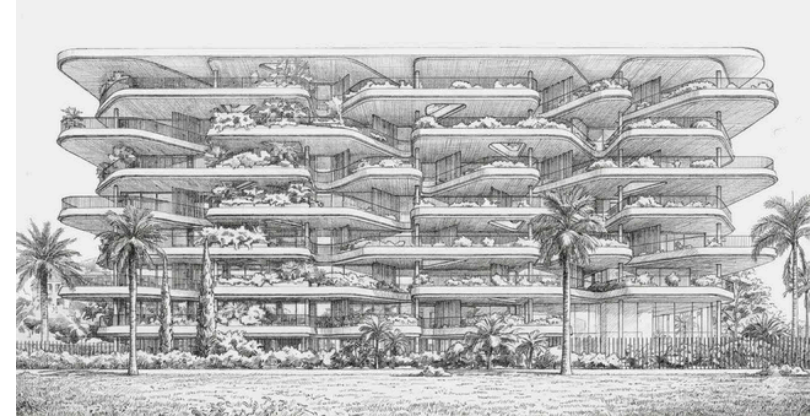
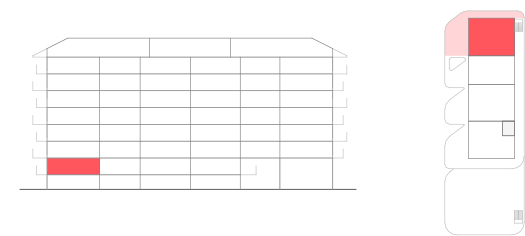


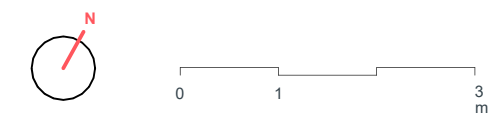
H03 | BLOCK A | 1° A



MASTER BEDROOM	15,13
BEDROOM 2	10,85
BEDROOM 3	14,77
KITCHEN-DINNING ROOM	34,12
MASTER BATHROOM	8,29
BATH 2	3,81
ENTRY	7,91
CORE	3,31

	PROJECT AREA	DECREE 218/2005
INTERIOR LIVING AREA	98,19	
TERRACE LIVING AREA	79,57	
TOTAL LIVING AREA	177,76	108,01
INT CONST AREA + PP. CA	156,82	
TERRACE CONSTRUCTED AREA	85,69	
TOTAL CONSTRUCTED AREA	242,51	166,64

(Include proper constructed area, CA proportional part and terrace)



The information contained in this plans can be subject to changes until the end of the project. In case of disagreement between the commercial information and the information of the last project approved, it will attend always the last project approved.