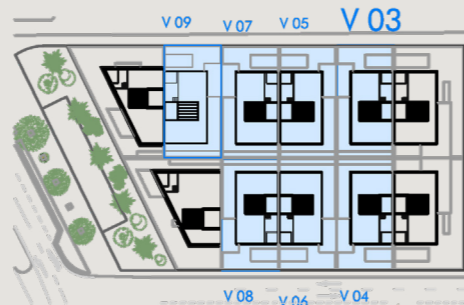


VILLA 3-9

6 BEDROOMS | 5+1 BATHROOMS



PLOT: 306,25 m²

Basement

Internal Built Area	207,00 m ²
Internal Useful Area	174,80 m ²
Terrace Built Area	17,50 m ²
Terrace Useful Area	14,50 m ²

Ground Floor

Internal Built Area	114,15 m ²
Internal Useful Area	93,60 m ²
Covered Terrace Built Area	24,90 m ²
Covered Terrace Useful Area	24,40 m ²

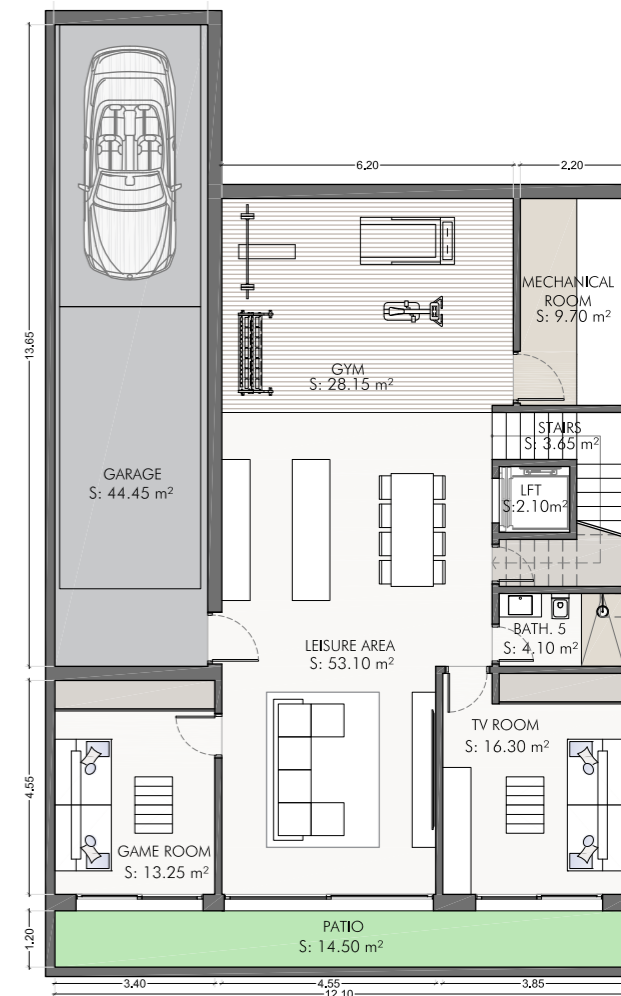
Terrace Built Area	95,20 m ²
Terrace Useful Area	87,15 m ²

First Floor

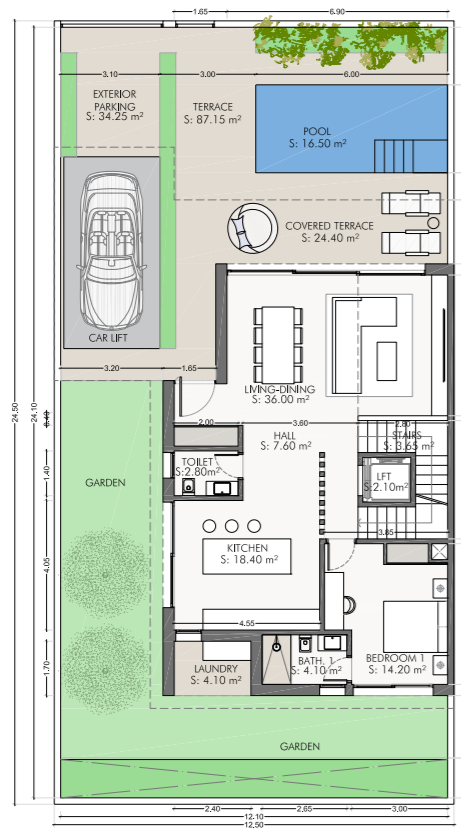
Internal Built Area	115,95 m ²
Internal Useful Area	83,60 m ²
Covered Terrace Built Area	22,80 m ²
Covered Terrace Useful Area	22,05 m ²

Solarium

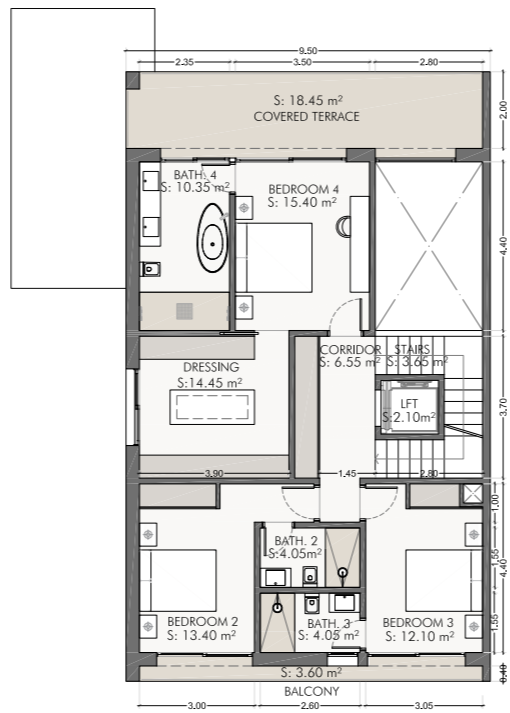
Internal Built Area	13,00 m ²
Internal Useful Area	9,40 m ²
Terrace Built Area	138,05 m ²
Terrace Useful Area	128,85 m ²
TOTAL INTERNAL BUILT AREA	450,10 m²
TOTAL TERRACE OUTDOOR AREA	298,45 m²
POOL AREA	16,50 m²
TOTAL BUILT AREA	748,55 m²
TOTAL USEFUL AREA	654,85 m²



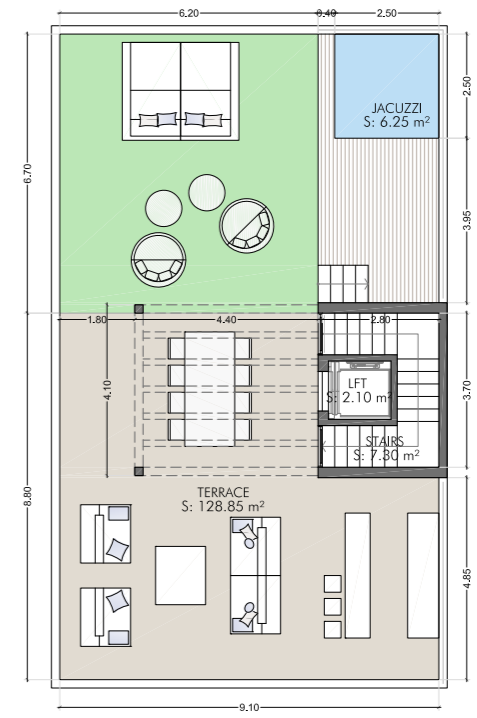
Basement



Ground Floor



First Floor



Solarium