

## VILLA 1-2

5 BEDROOMS | 5+1 BATHROOMS



PLOT: 379,75 m<sup>2</sup>

### Basement

Internal Built Area	191,00 m <sup>2</sup>
Internal Useful Area	161,95 m <sup>2</sup>
Terrace Built Area	19,65 m <sup>2</sup>
Terrace Useful Area	15,35 m <sup>2</sup>

### Ground Floor

Internal Built Area	122,85 m <sup>2</sup>
Internal Useful Area	97,35 m <sup>2</sup>
Covered Terrace Built Area	30,45 m <sup>2</sup>
Covered Terrace Useful Area	30,05 m <sup>2</sup>

Terrace Built Area	143,15 m <sup>2</sup>
Terrace Useful Area	130,95 m <sup>2</sup>

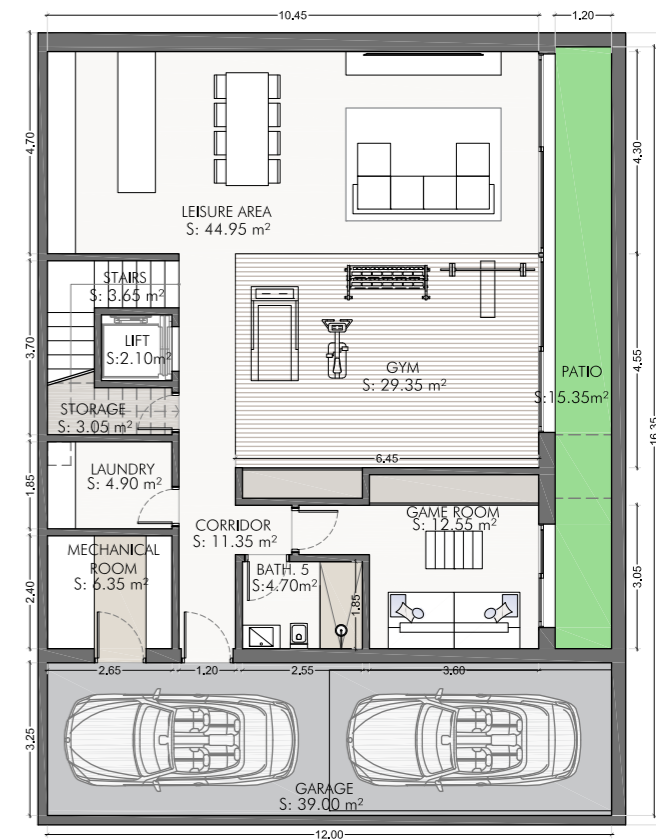
### First Floor

Internal Built Area	113,20 m <sup>2</sup>
Internal Useful Area	85,20 m <sup>2</sup>
Covered Terrace Built Area	22,80 m <sup>2</sup>
Covered Terrace Useful Area	22,05 m <sup>2</sup>

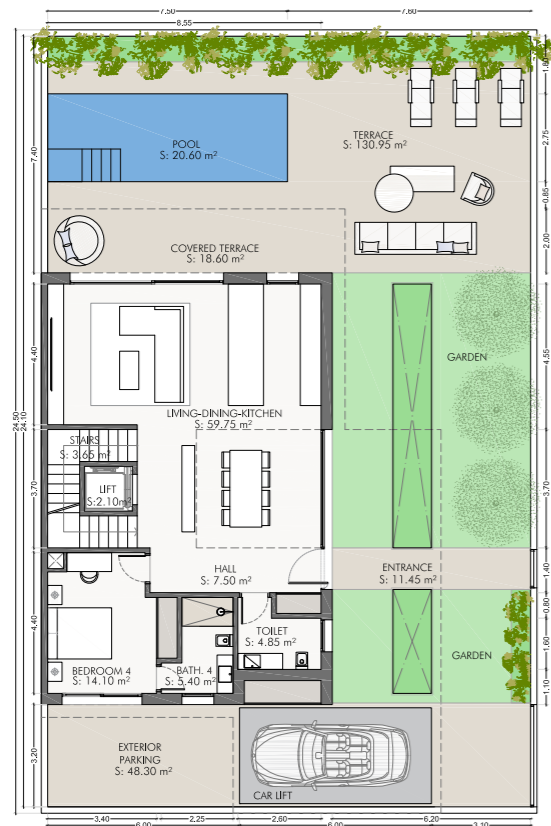
### Solarium

Internal Built Area	13,00 m <sup>2</sup>
Internal Useful Area	9,40 m <sup>2</sup>
Terrace Built Area	138,05 m <sup>2</sup>
Terrace Useful Area	128,85 m <sup>2</sup>

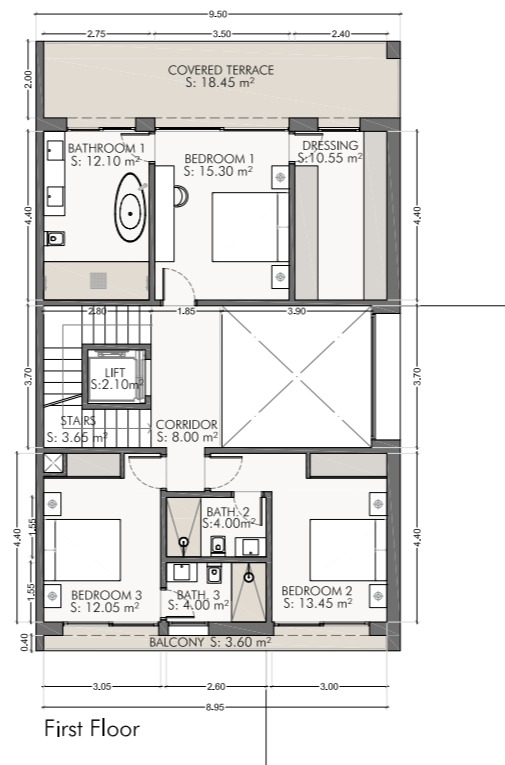
<b>TOTAL INTERNAL BUILT AREA</b>	<b>440,05 m<sup>2</sup></b>
<b>TOTAL TERRACE OUTDOOR AREA</b>	<b>354,10 m<sup>2</sup></b>
<b>POOL AREA</b>	<b>20,60 m<sup>2</sup></b>
<b>TOTAL BUILT AREA</b>	<b>794,15 m<sup>2</sup></b>
<b>TOTAL USEFUL AREA</b>	<b>701,75 m<sup>2</sup></b>



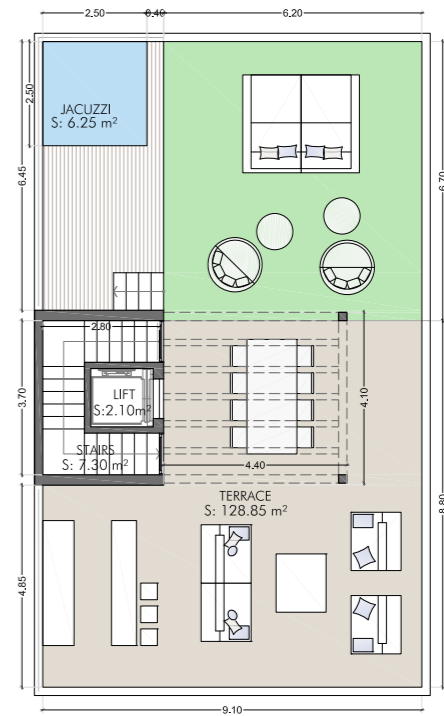
Basement



Ground Floor



First Floor



Solarium