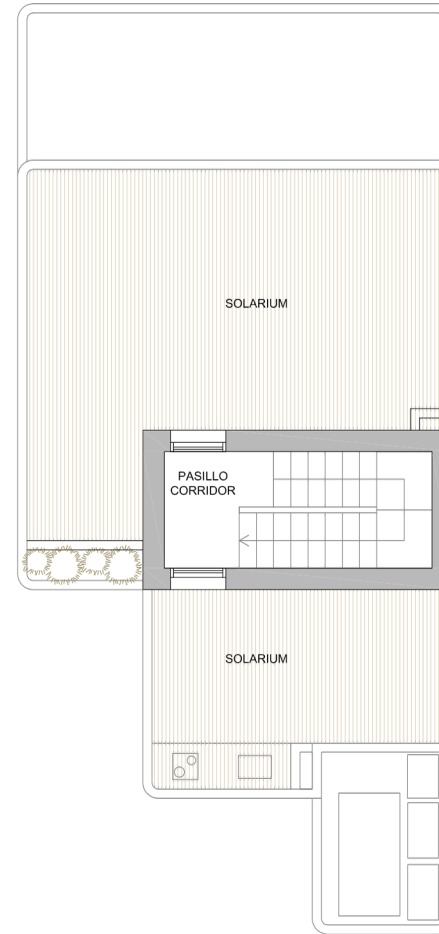
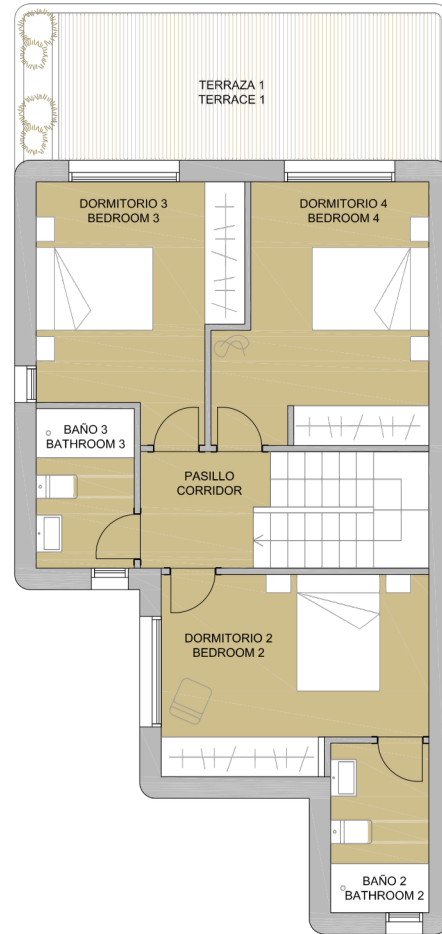
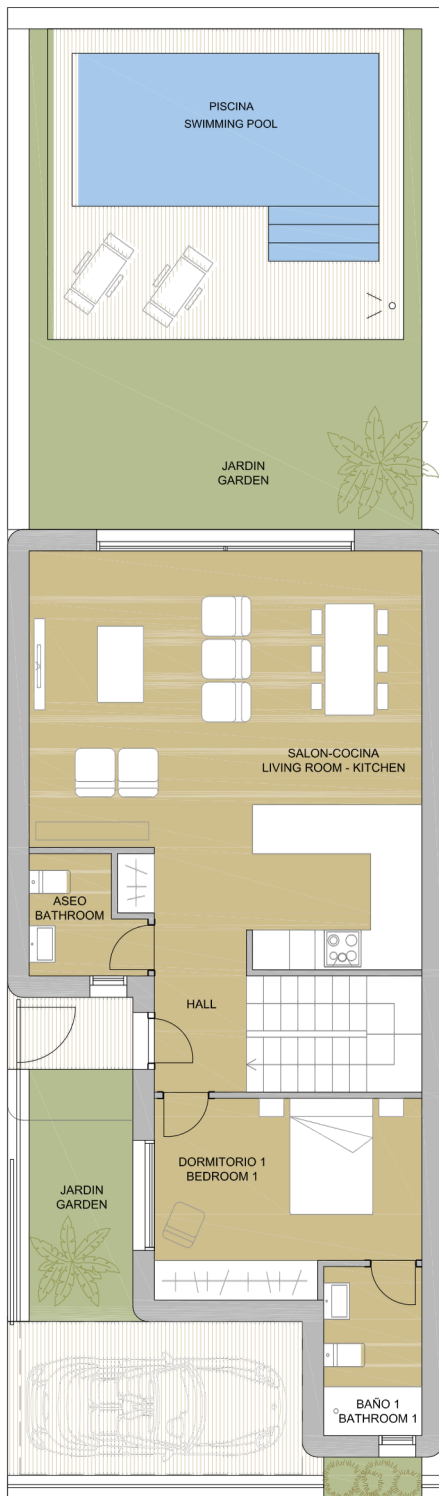


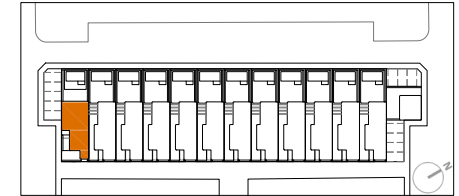
PLAN SUBJECT TO POSSIBLE MODIFICATIONS FOR TECHNICAL OR LEGAL REASONS. THE MEASUREMENTS SHOWN ARE APPROXIMATE
 PLANO SUJETO A POSIBLES MODIFICACIONES DE ÍNDOLE TÉCNICA O JURÍDICA. LAS SUPERFICIES SON APROXIMADAS



RIOMAR LUXURY VILLAS

MIL PALMERAS - PILAR DE LA HORADADA

VIVIENDA TIPO V.1



SUPERFICIES ÚTILES / OCCUPIABLE AREA

HALL / HALL	3.00 m ²
LIVING ROOM - KITCHEN	40.30 m ²
ASEO / BATHROOM	3.20 m ²
DORMITORIO 1 / BEDROOM 1	13.30 m ²
BAÑO 1 / BATHROOM 1	4.40 m ²
PASO / CORRIDOR	3.70 m ²
DORMITORIO 2 / BEDROOM 2	13.30 m ²
BAÑO 2 / BATHROOM 2	4.40 m ²
DORMITORIO 3 / BEDROOM 3	12.15 m ²
DORMITORIO 4 / BEDROOM 4	13.70 m ²
BAÑO 3 / BATHROOM 3	4.10 m ²
PASO / CORRIDOR	2.80 m ²
ESCALERAS / STAIRS	10.80 m ²

TERRAZA P1 / TERRACE 1F	15.00 m ²
SOLARIUM 1	33.50 m ²
SOLARIUM 2	13.60 m ²
JARDIN 1 / GARDEN 1	75.00 m ²

SUPERFICIES CONST. / BUILT AREA

SUP. CERRADA / CLOSED AREA	173,40 m ²
CLOSED AREA + TERRACE	235.50 m ²
CLOSED AREA + TERRACE + GARDEN	310.50 m ²