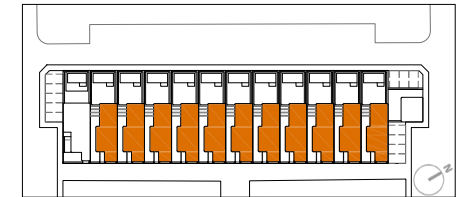
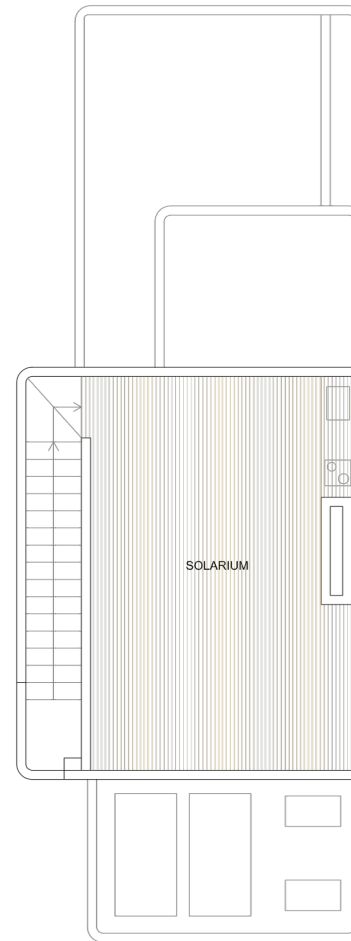
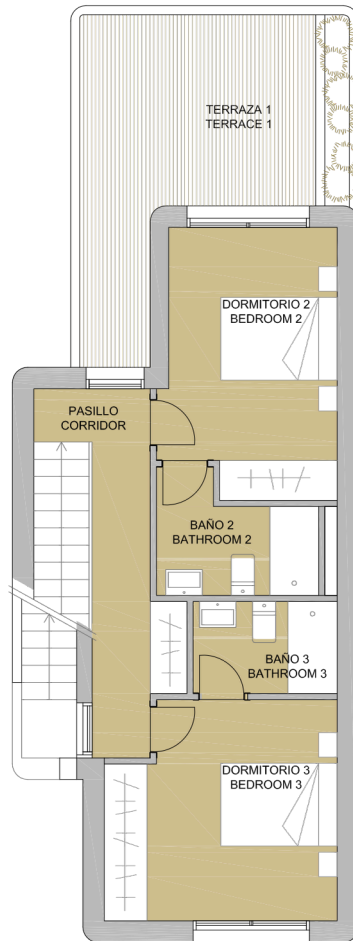
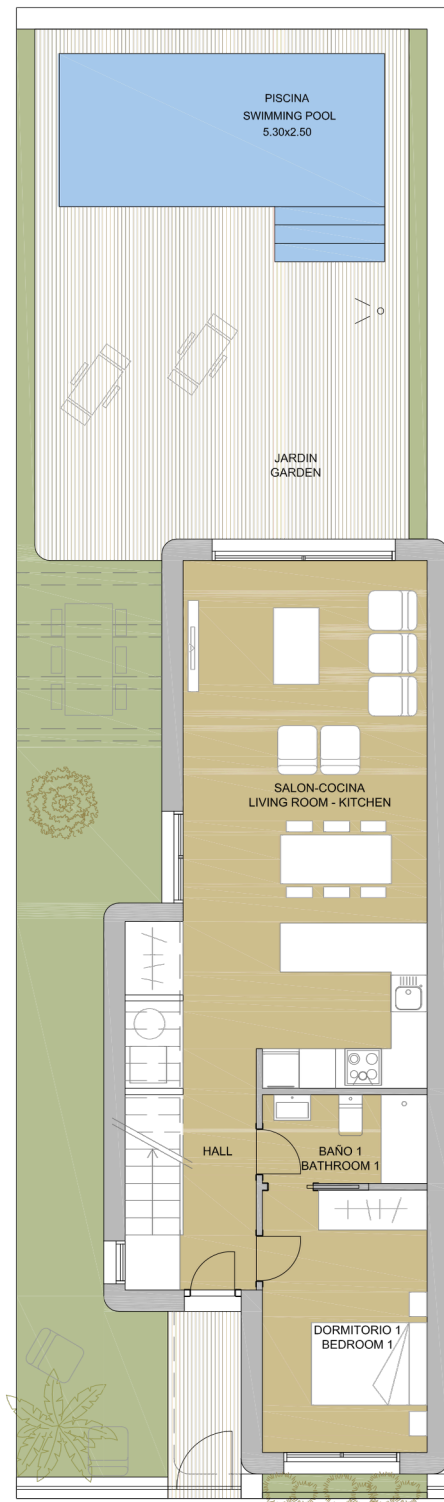


PLAN SUBJECT TO POSSIBLE MODIFICATIONS FOR TECHNICAL OR LEGAL REASONS. THE MEASUREMENTS SHOWN ARE APPROXIMATE
 PLANO SUJETO A POSIBLES MODIFICACIONES DE ÍNDOLE TÉCNICA O JURÍDICA. LAS SUPERFICIES SON APROXIMADAS



RIOMAR LUXURY VILLAS

MIL PALMERAS - PILAR DE LA HORADADA

VIVIENDA TIPO V2 A V12

SUPERFICIES ÚTILES / OCCUPIABLE AREA

HALL / HALL	3.95 m ²
LIVING ROOM - KITCHEN	37.10 m ²
DORMITORIO 1 / BEDROOM 1	11.60 m ²
BAÑO 1 / BATHROOM 1	3.90 m ²
PASO / CORRIDOR	7.45 m ²
DORMITORIO 2 / BEDROOM 2	12.00 m ²
BAÑO 2 / BATHROOM 2	4.40 m ²
DORMITORIO 3 / BEDROOM 3	12.80 m ²
BAÑO 3 / BATHROOM 3	3.50 m ²
ESCALERAS / STAIRS	4.90 m ²

TERRAZA P1 / TERRACE 1F	15.00 m ²
SOLARIUM	26.80 m ²
JARDIN 1 / GARDEN 1	91.00 m ²

SUPERFICIES CONST. / BUILT AREA

SUP. CERRADA / CLOSED AREA	131.50 m ²
CLOSED AREA + TERRACE	173.30 m ²
CLOSED AREA + TERRACE + GARDEN	264.30 m ²