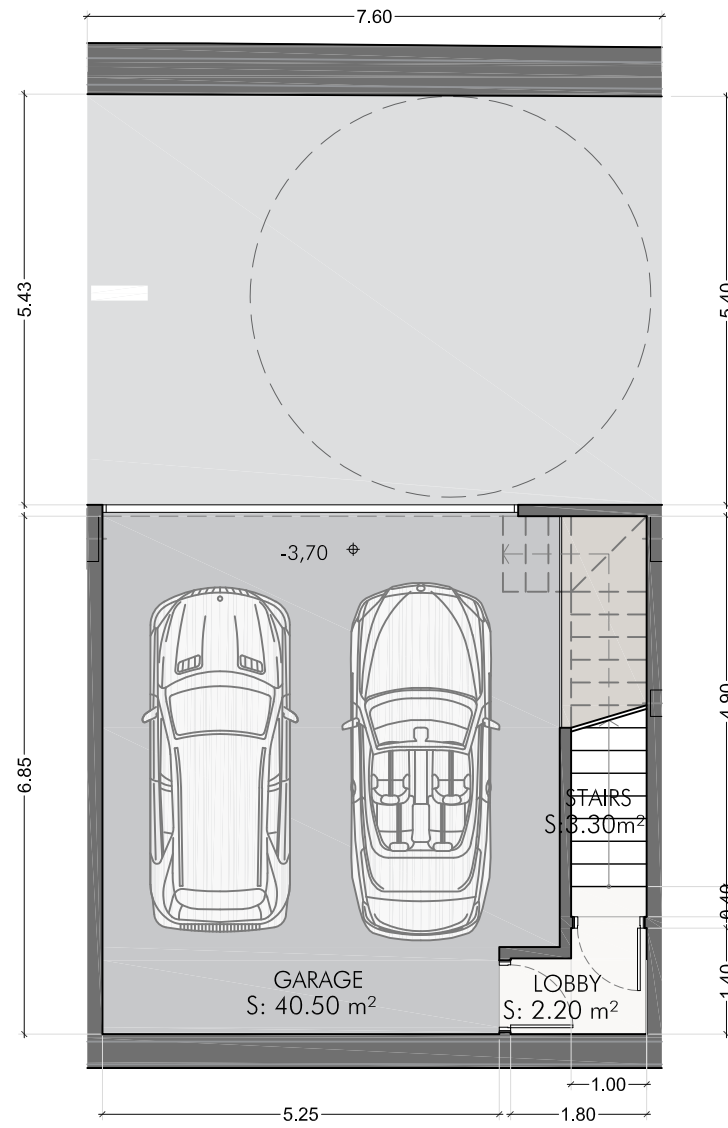
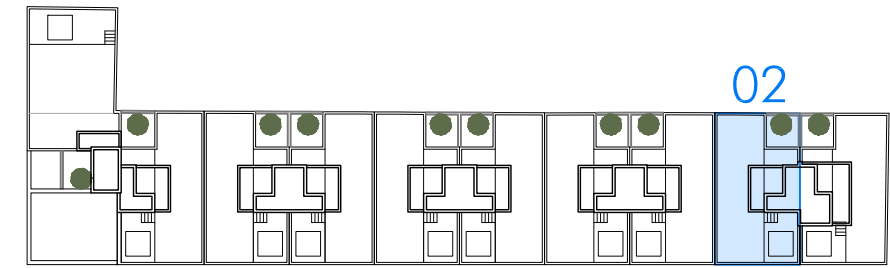


TOWN HOUSE 02

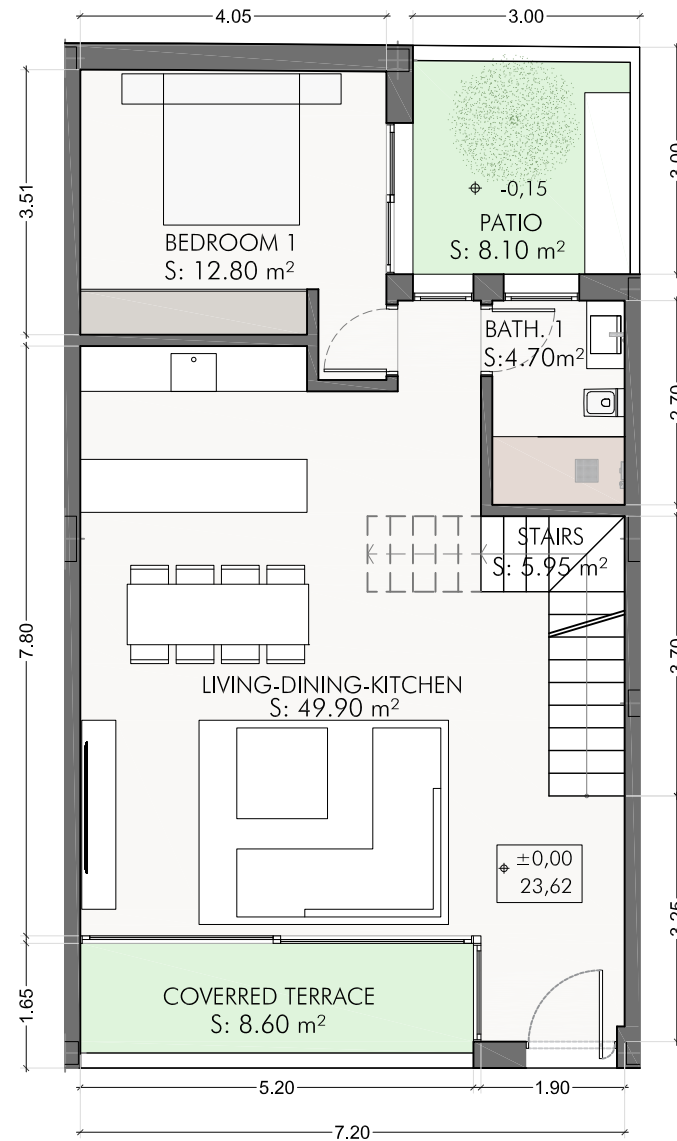
4 BEDROOMS

Total Internal Built area	253,62 m ²
Total Outdoor area	104,72 m ²
TOTAL BUILT AREA	347,09 m²
TOTAL USEFUL AREA	290,20 m²

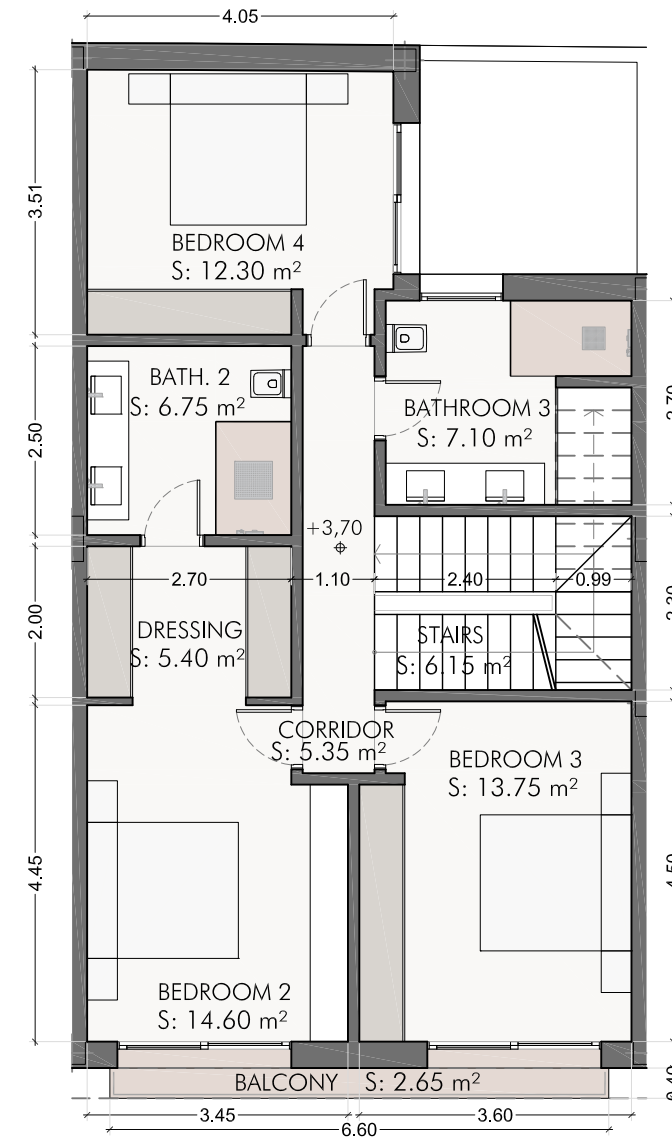
Basement	
Internal Built area	56,62 m ²
Internal Useful area	46,00 m ²
Ground Floor	
Internal Built area	93,80 m ²
Internal Useful area	73,35 m ²
Covered Terrace Useful area	8,60 m ²
Terrace built area	9,04 m ²
Terrace Useful area	8,10 m ²
First Floor	
Internal Built area	93,80 m ²
Internal Useful area	71,40 m ²
Terrace Useful area	2,65 m ²
Solarium	
Internal Built area	9,40 m ²
Internal Useful area	3,10 m ²
Terrace built area	84,43 m ²
Terrace Useful area	77,00 m ²



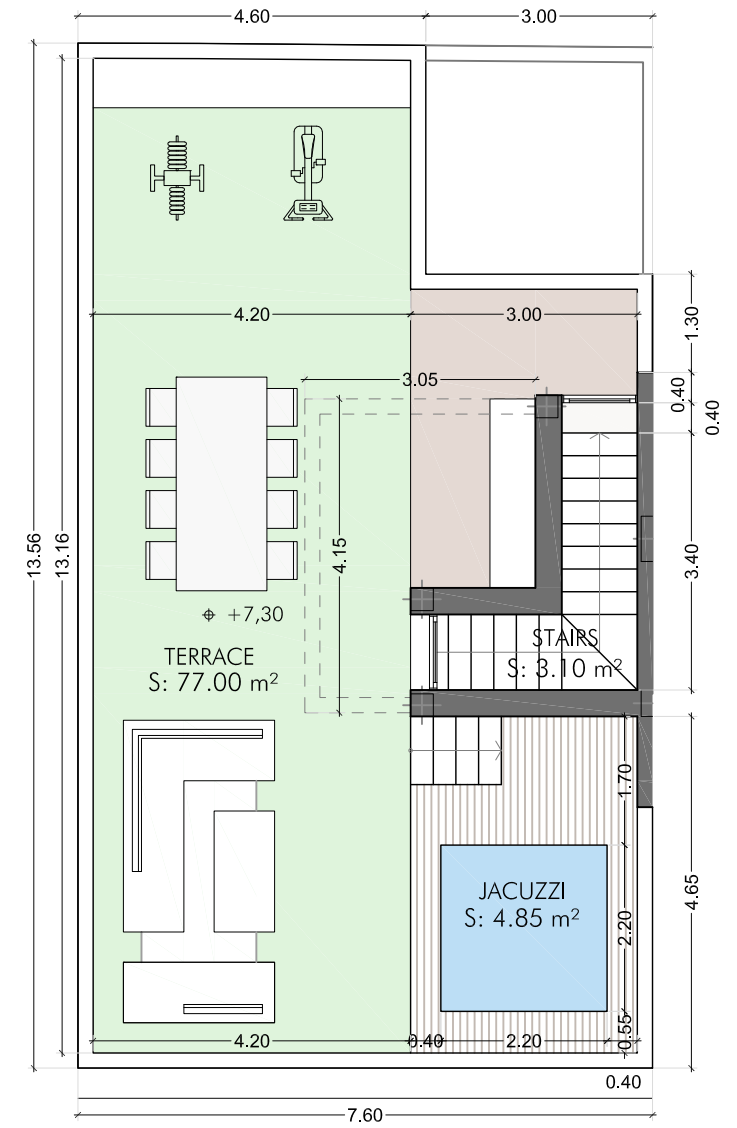
Basement



Ground Floor



First Floor



Solarium

