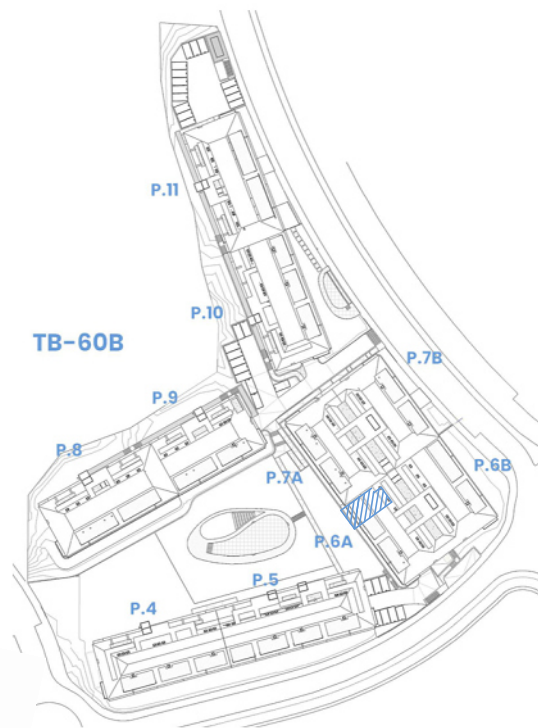
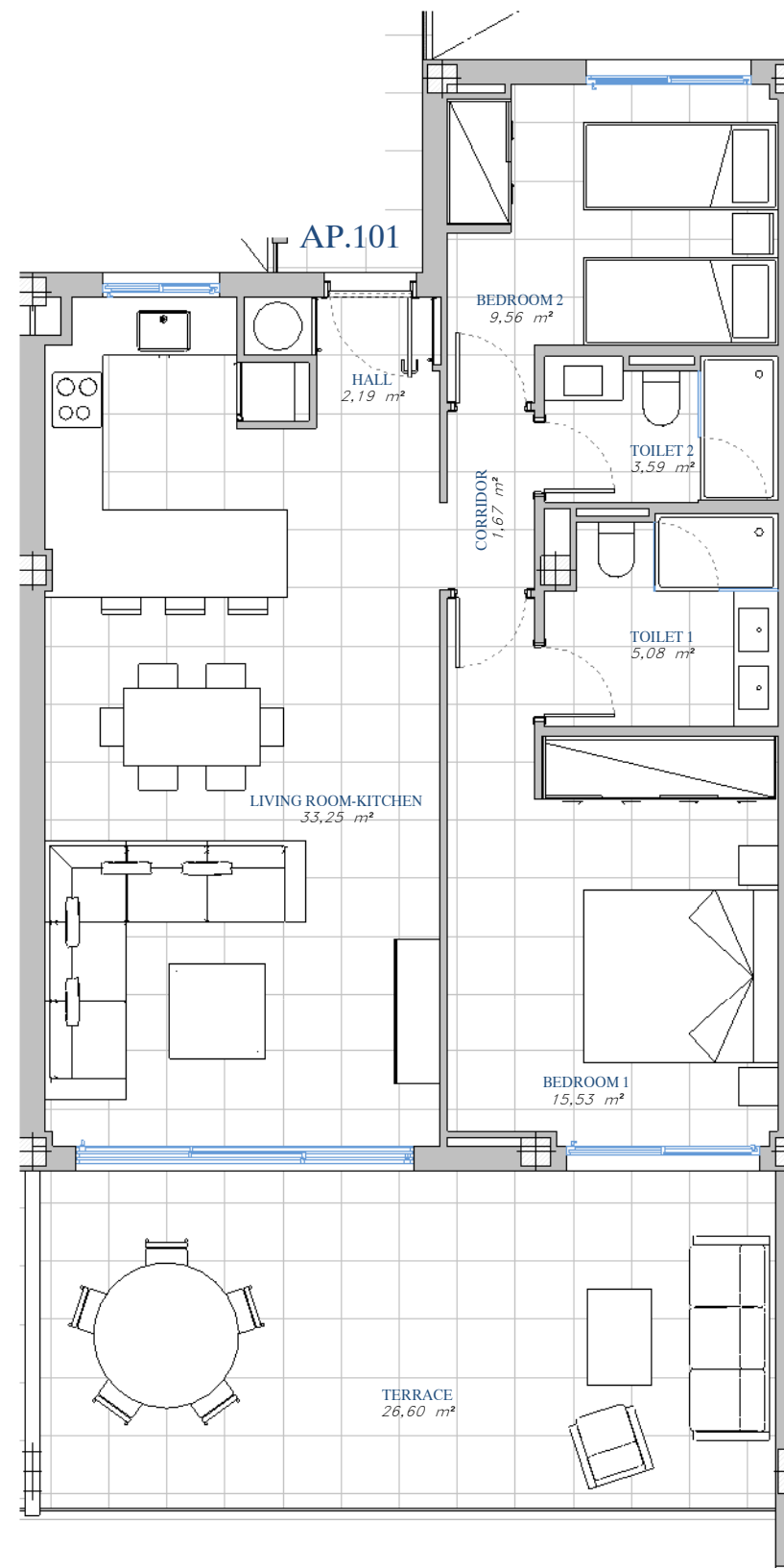


PORTAL 6A  
 AP.N°101  
 SECOND\_FLOOR



SITE PLAN



ACCORDING TO DECRETO 218/2005

Useful Area	77,96 m <sup>2</sup>
Built Area	104,54 m <sup>2</sup>

BUILT AREA

Living Area	81,12 m <sup>2</sup>
Terrace Area	28,17 m <sup>2</sup>
TOTAL BUILT AREA:	109,29 m <sup>2</sup>

