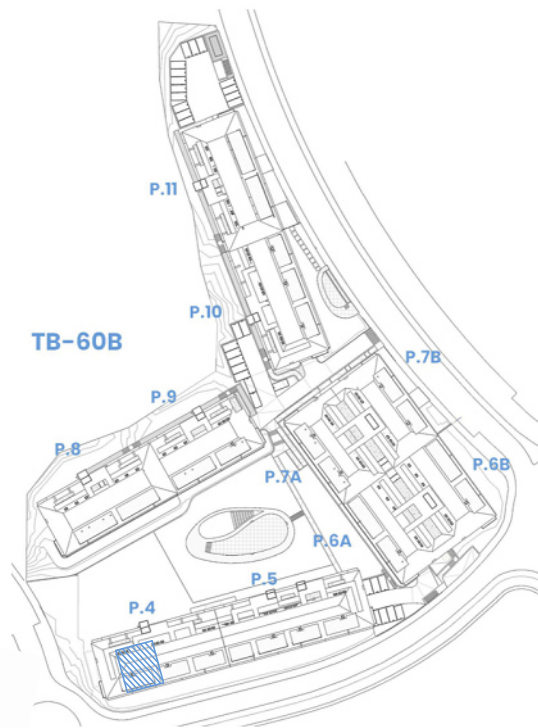
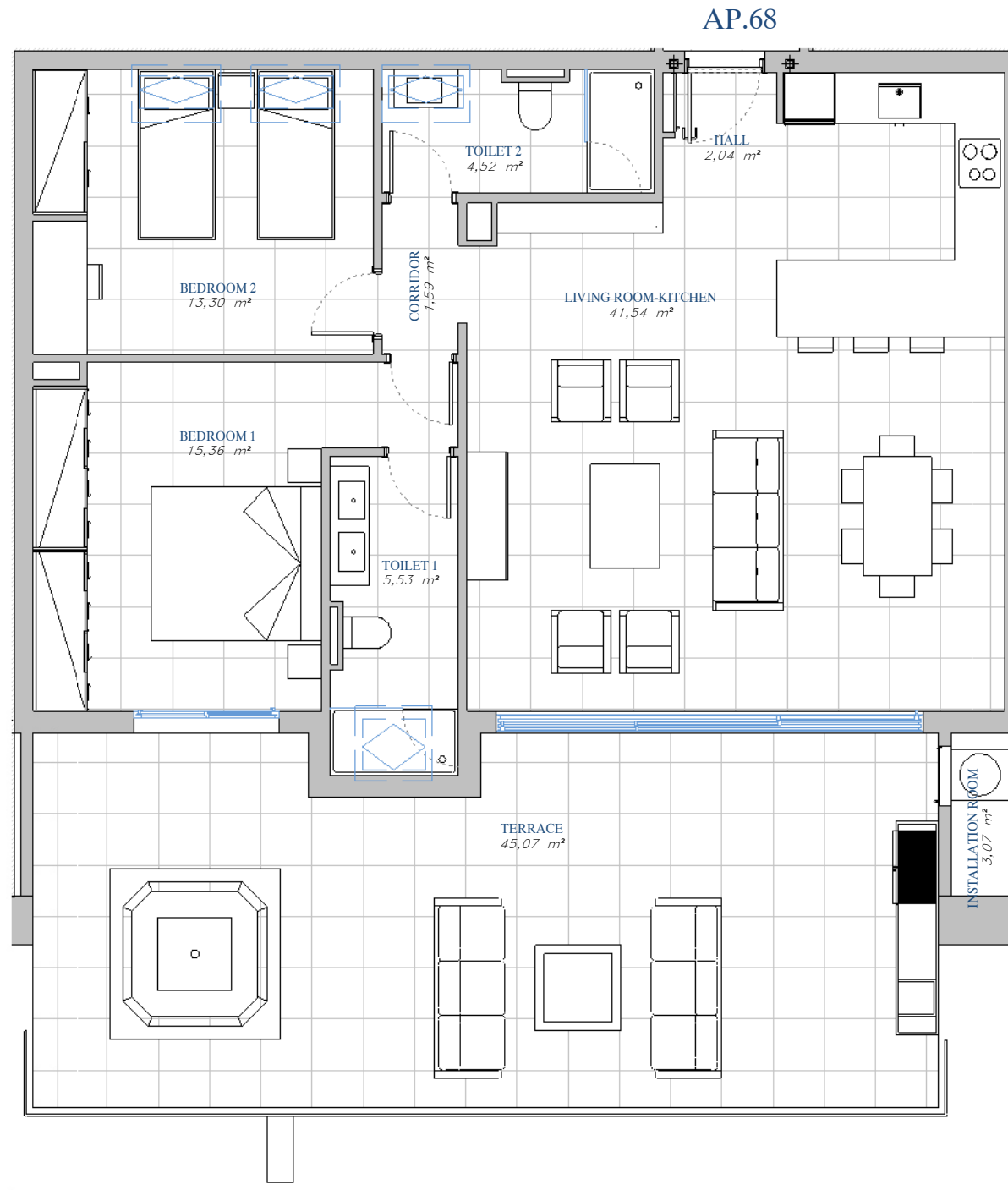


PORTAL 4  
AP.N°68 ATTIC



SITE PLAN



ACCORDING TO DECRETO 218/2005

Useful Area	95,65 m <sup>2</sup>
Built Area	123,05 m <sup>2</sup>

BUILT AREA

Living Area	95,19 m <sup>2</sup>
Terrace Area	50,90 m <sup>2</sup>
<b>TOTAL BUILT AREA:</b>	<b>146,09 m<sup>2</sup></b>



GRAPHIC SCALE

1 : 75

