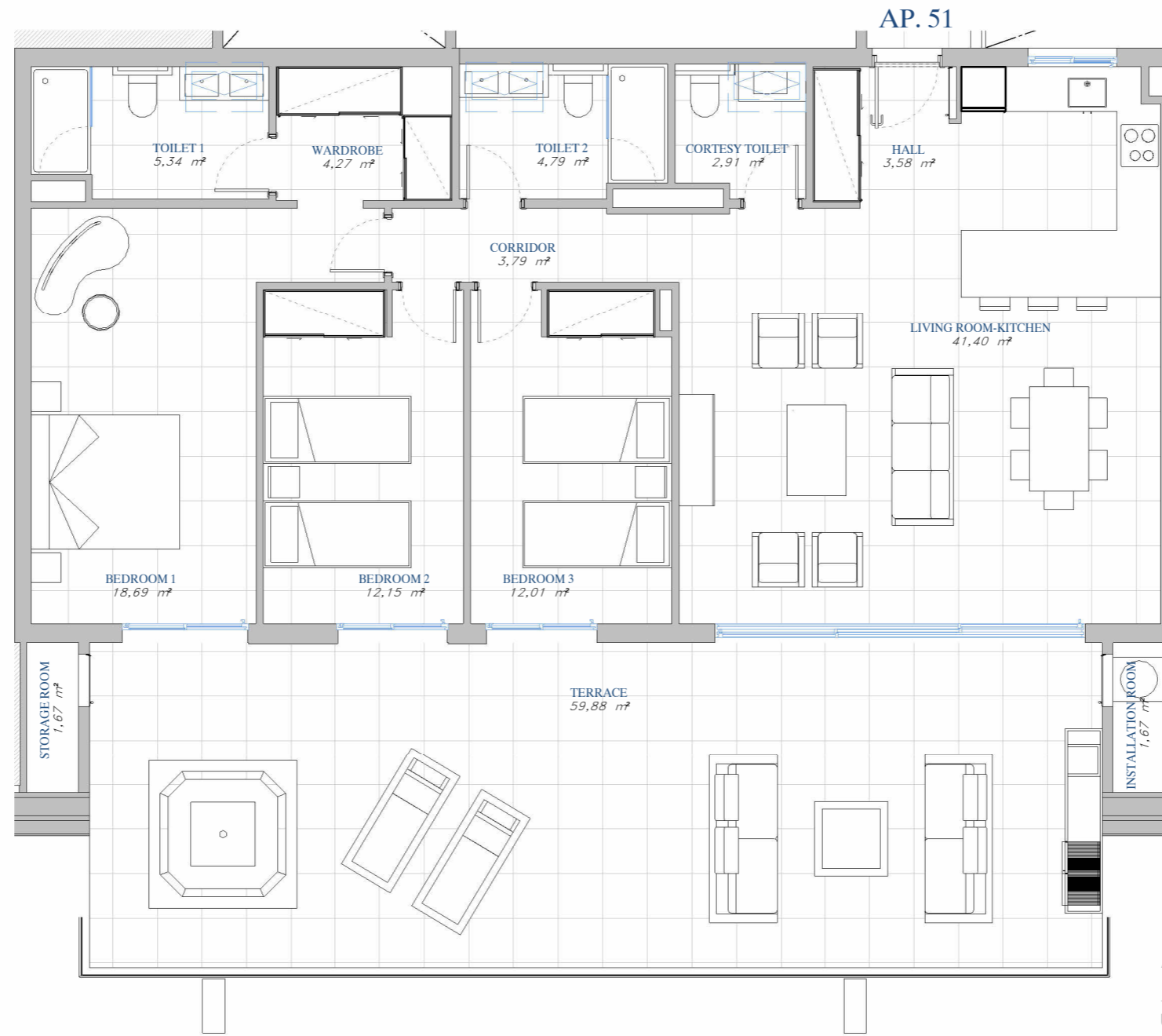


PORTAL 3  
AP.N°51 ATTIC

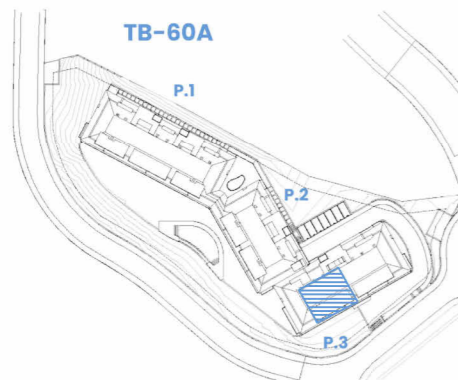


ACCORDING TO DECRETO 218/2005

Useful Area	122,66 m <sup>2</sup>
Built Area	163,16 m <sup>2</sup>

BUILT AREA

Living Area	124,24 m <sup>2</sup>
Terrace Area	69,54 m <sup>2</sup>
<b>TOTAL BUILT AREA:</b>	<b>193,79 m<sup>2</sup></b>



SITE PLAN



GRAPHIC SCALE

1:75

