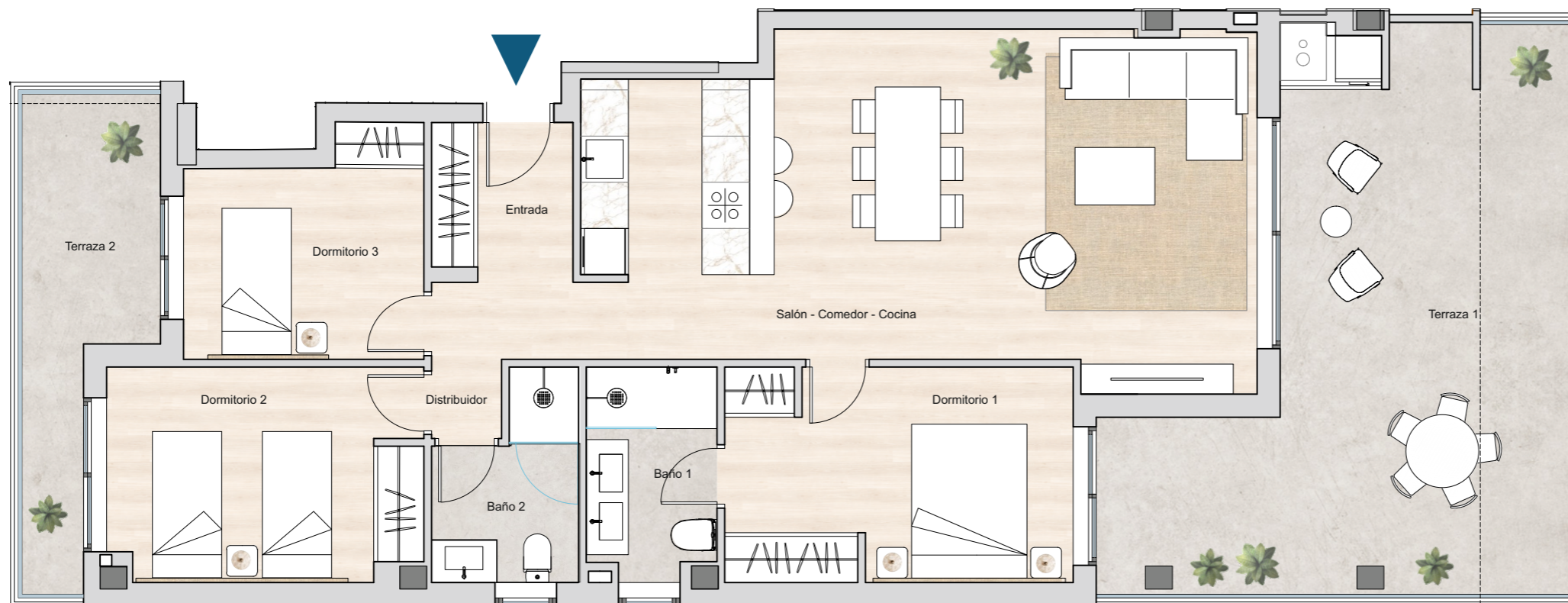
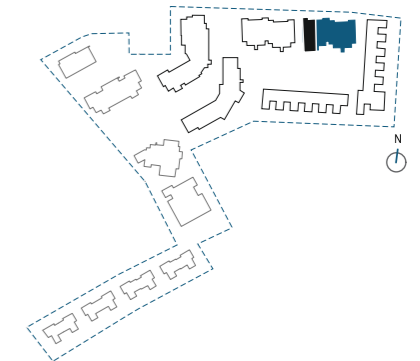


R5 - BLOQUE C2
VIVIENDA 86 - PLANTA BAJA

3 DORMITORIOS
 TERRAZA



| SUPERFICIES ÚTILES | |
|--------------------------|----------------------------|
| ENTRADA | 3.81 m ² |
| SALÓN - COMEDOR - COCINA | 36.39 m ² |
| DISTRIBUIDOR | 3.62 m ² |
| DORMITORIO 1 | 12.63 m ² |
| BAÑO 1 | 4.56 m ² |
| DORMITORIO 2 | 11.20 m ² |
| BAÑO 2 | 4.36 m ² |
| DORMITORIO 3 | 8.47 m ² |
| LAVADERO | 1.03 m ² |
| TOTAL SUP. ÚTIL | 86.07 m² |

| | |
|---------------------------------|----------------------------|
| TERRAZA 1 | 32.27 m ² |
| TERRAZA 2 | 9.38 m ² |
| TOTAL SUP. ÚTIL EXTERIOR | 41.65 m² |

| SUPERFICIES CONSTRUIDAS | |
|------------------------------|-----------------------------|
| VIVIENDA | 100.74 m ² |
| TERRAZA 1 | 34.56 m ² |
| TERRAZA 2 | 9.86 m ² |
| TOTAL SUP. CONSTRUIDA | 145.16 m² |



PROYECTO DE 118 VIVIENDAS,
 TRASTEROS, GARAJE Y PISCINAS

