

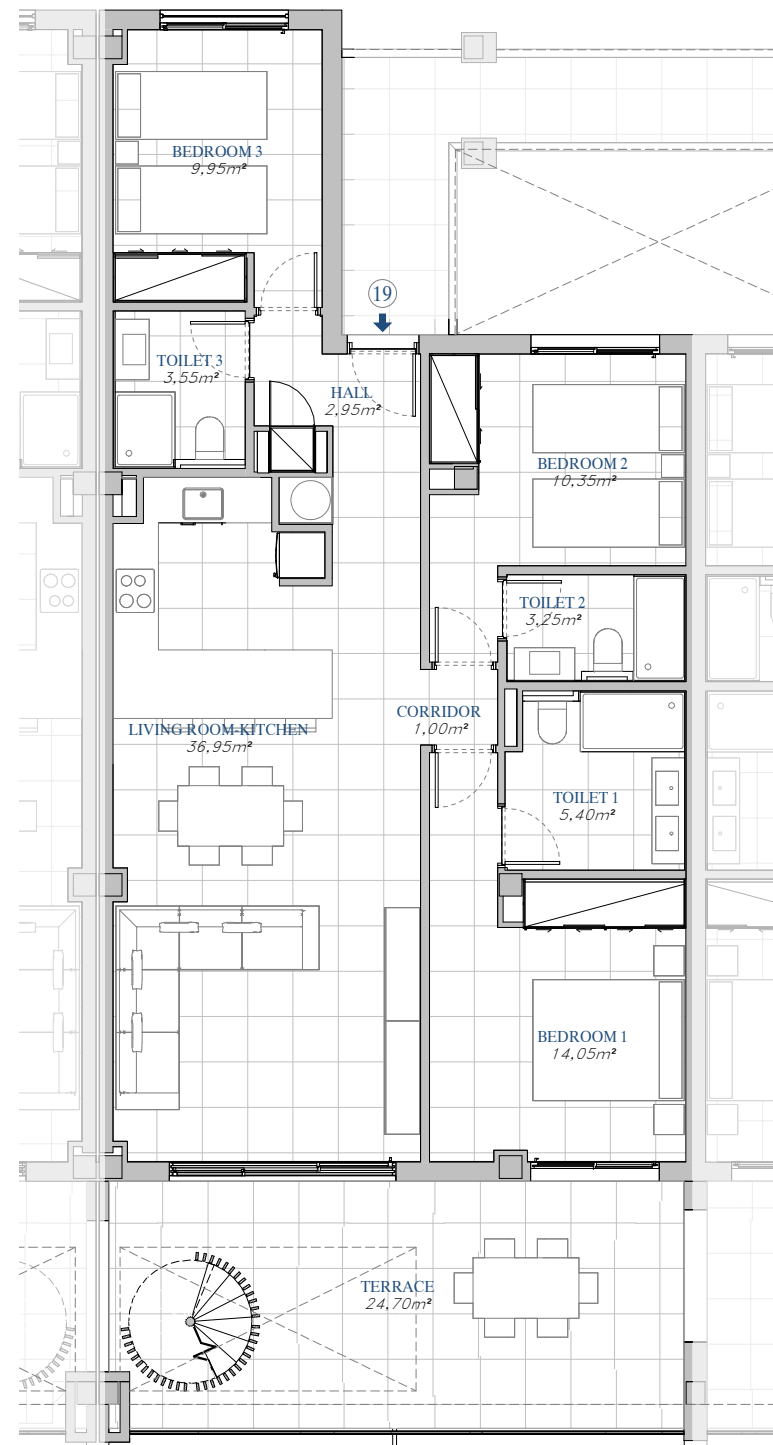
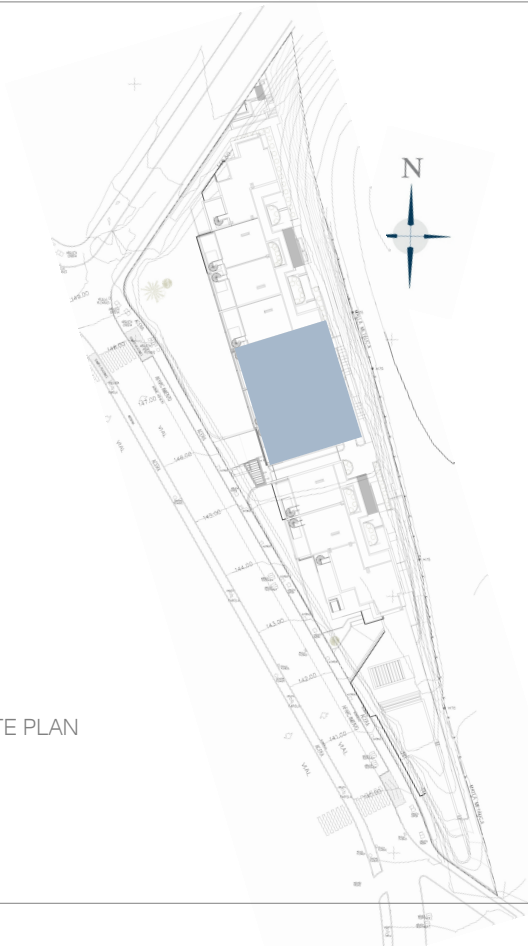
MODULO B

FRONT DOOR 2

SECOND FLOOR

SKY SOLARIUM A

SITE PLAN



TOTAL USEFUL AREA:
178,55 m²

TOTAL USEFUL AREA:
ACCORDING TO RD 218/2005
96,20 m²

BUILT AREA

Living Area	101,58 m ²
Terrace	102,71 m ²

TOTAL BUILT AREA: 204,29 m²



GRAPHIC SCALE

