

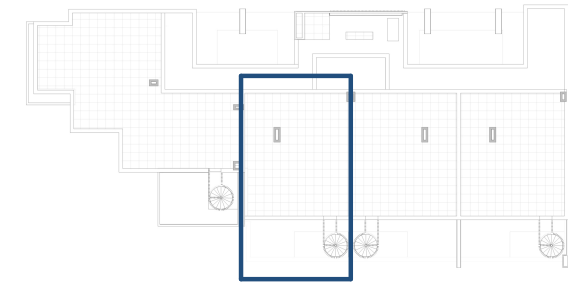
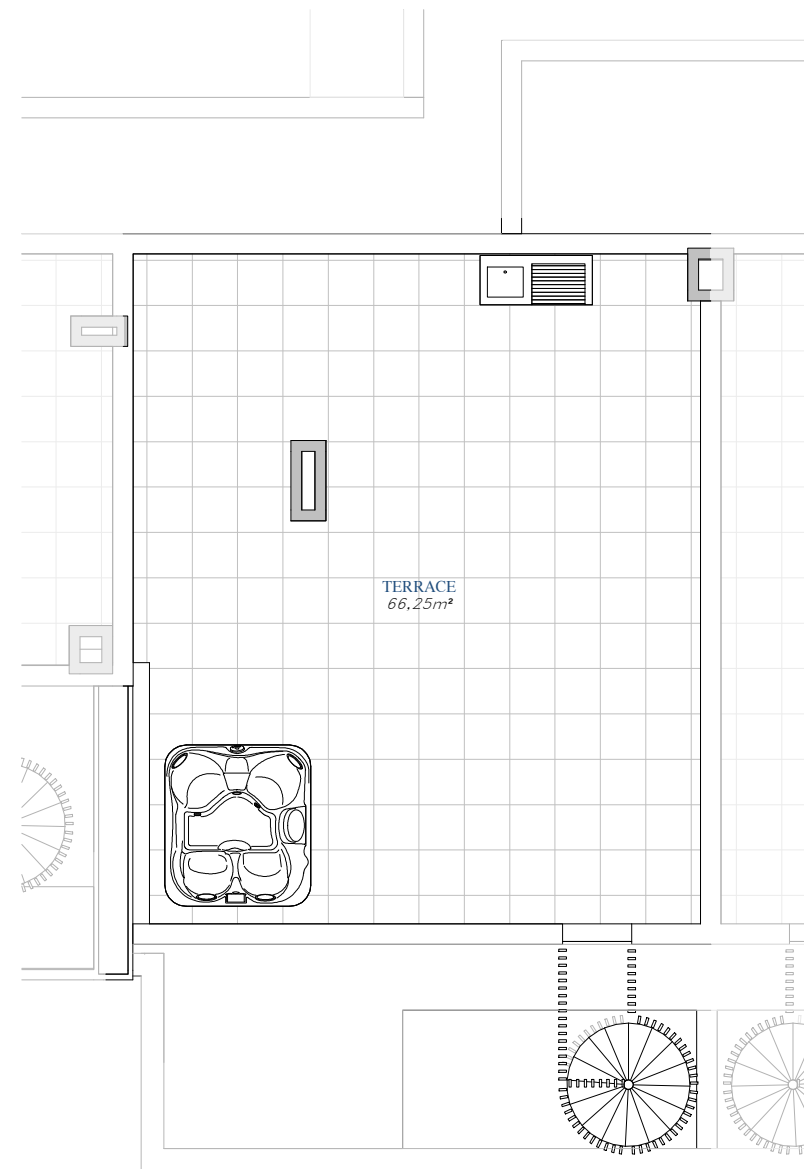
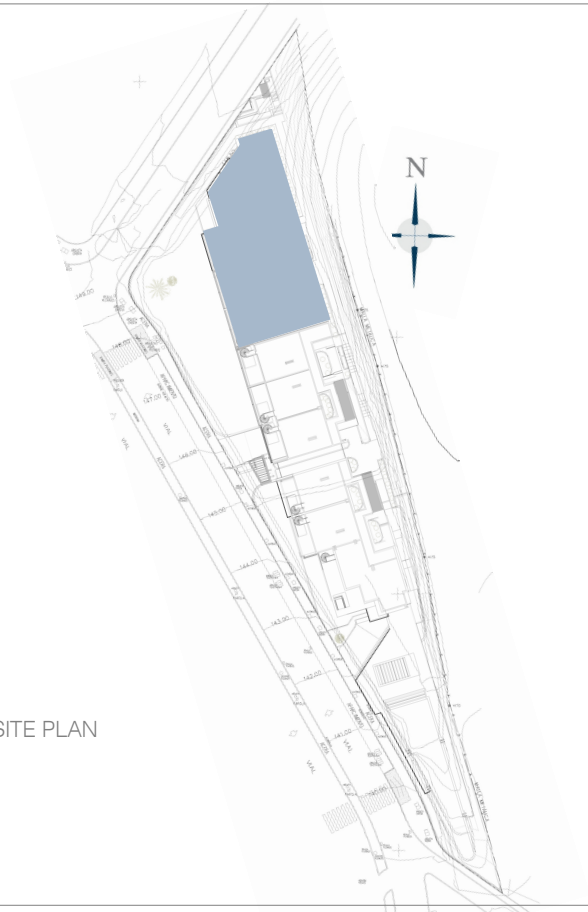
MODULO A

FRONT DOOR 1

SOLARIUM

SKY SOLARIUM B

SITE PLAN



TOTAL USEFUL AREA:
158,85 m²

TOTAL USEFUL AREA:
ACCORDING TO RD 218/2005
76,18 m²

BUILT AREA

Living Area 80,15 m²

Terrace 99,81 m²

TOTAL BUILT AREA: 179,96 m²



GRAPHIC SCALE

