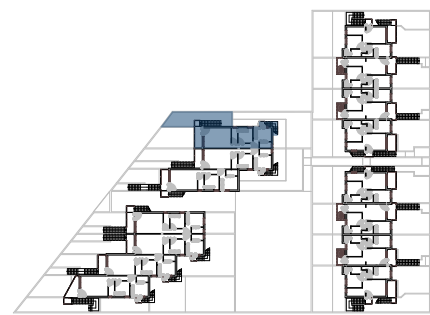


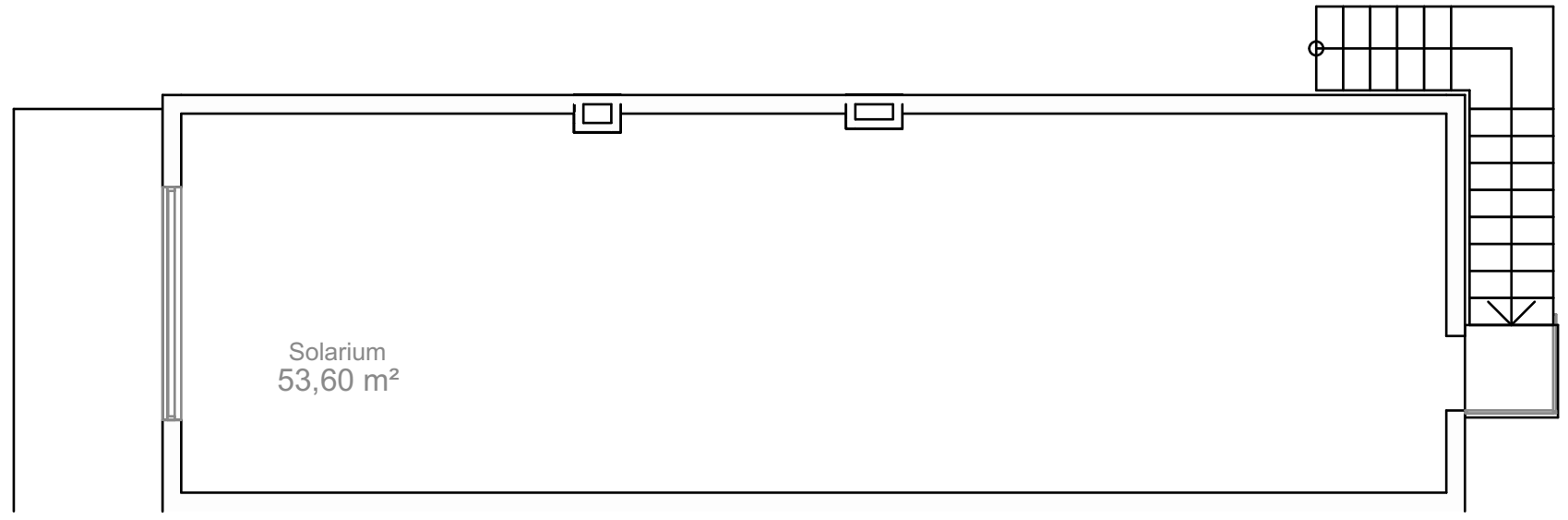
VIVIENDA B.2.1

VIVIENDA DE 2 DORMITORIOS

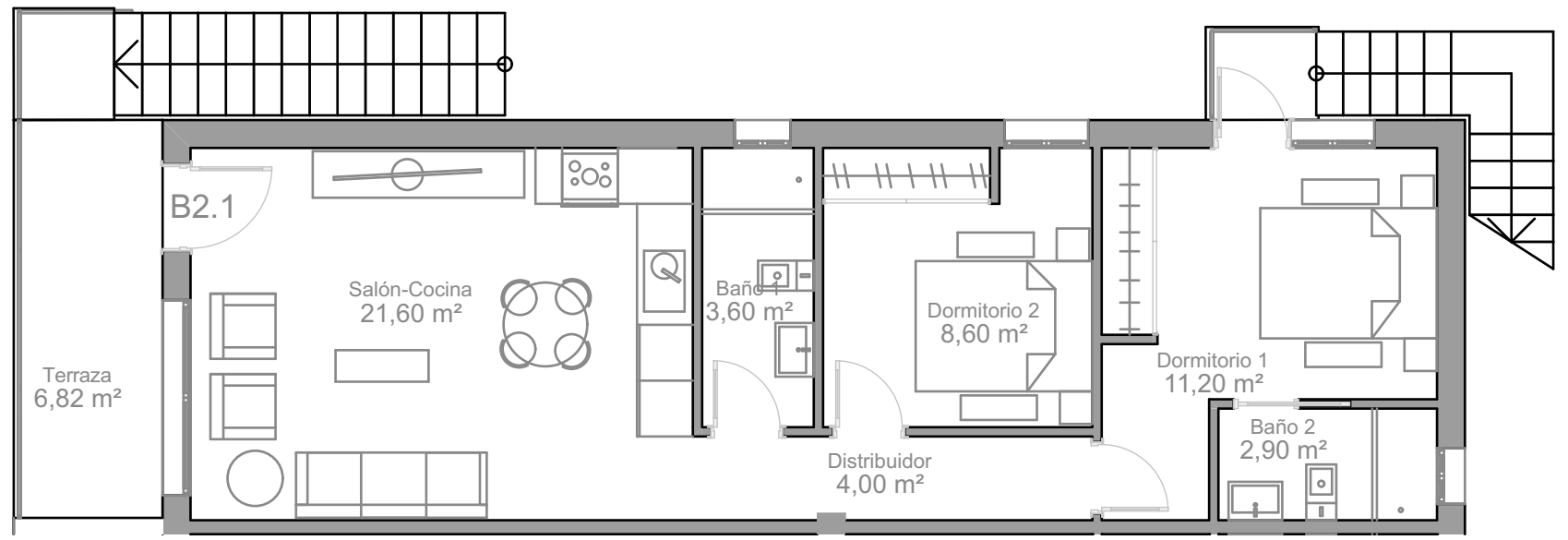
Superficie Útil Vivienda	51,90 m2
Terrazas y Solarium	60,42 m2
Patios y Jardines	35,38 m2
TOTAL CONSTRUIDA VIVIENDA	64,52 m2



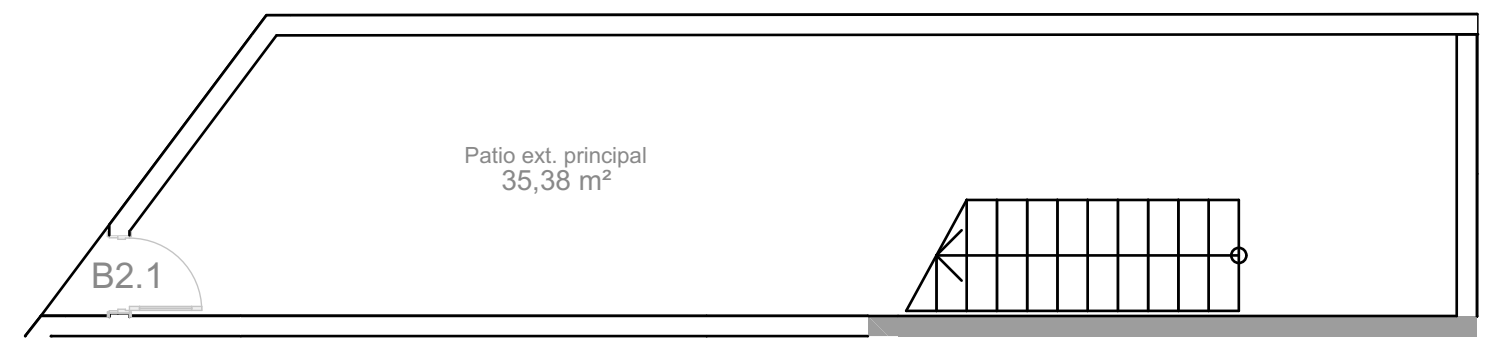
(*)



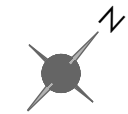
SOLARIUM



PLANTA PRIMERA



PLANTA BAJA



Escala Gráfica