

# BLOQ. 4

## Nº: 73

**SUPERFICIES(M2)**

VIVIENDA.....64,40\*

PORCHE.....22,00

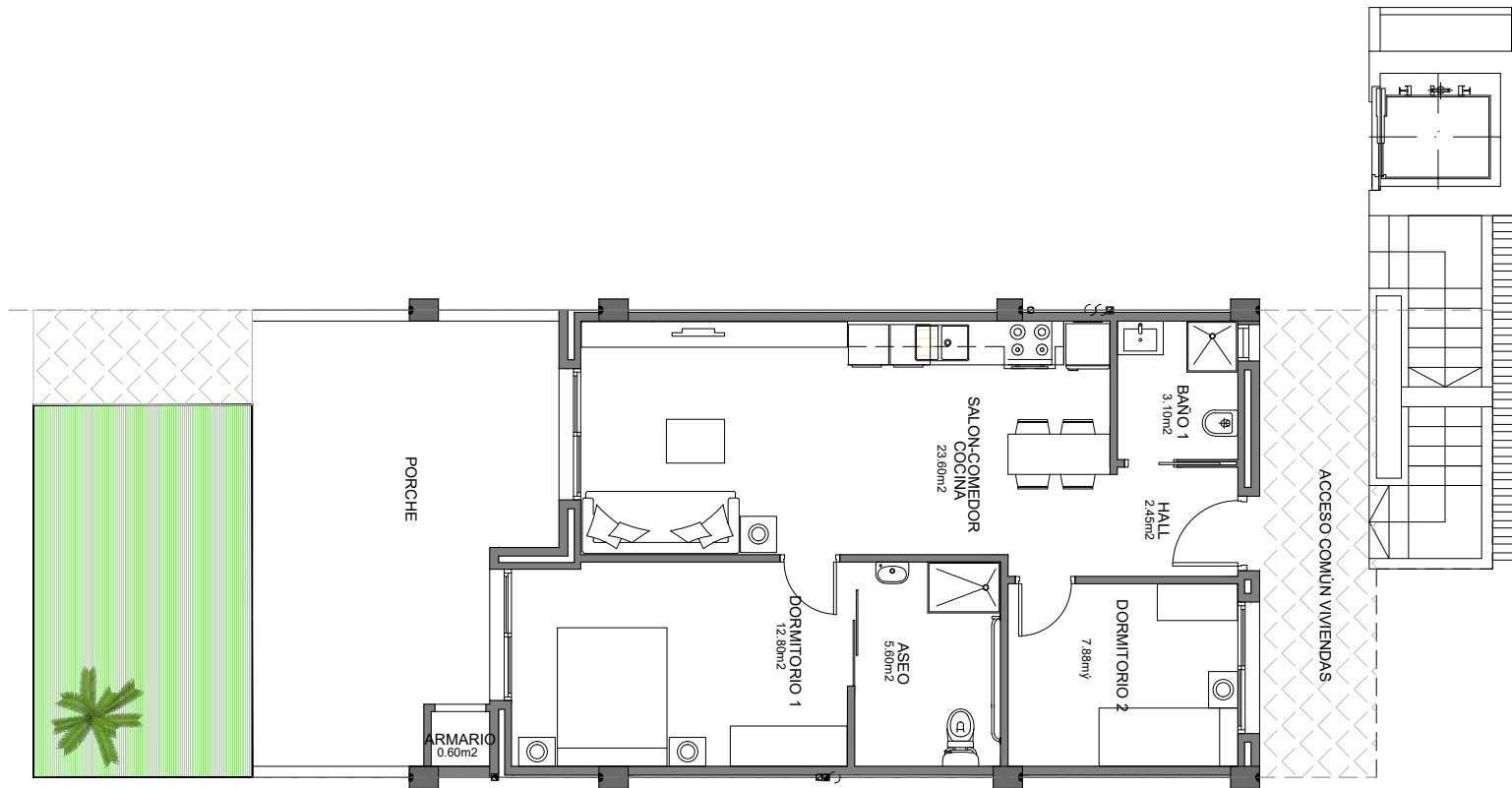
**TOTAL \_ 86,40**

**JARDIN \_ 10,00**

\*SUP. CONSTRUIDAS

2 DORMITORIOS

2 BAÑOS



### Planta Baja