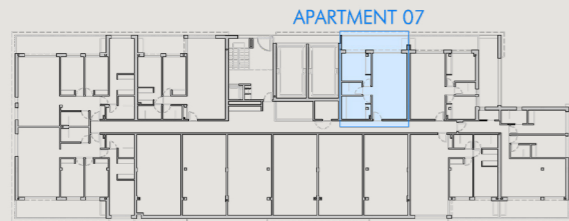


APARTMENT 7 1 BEDROOM | GROUND FLOOR

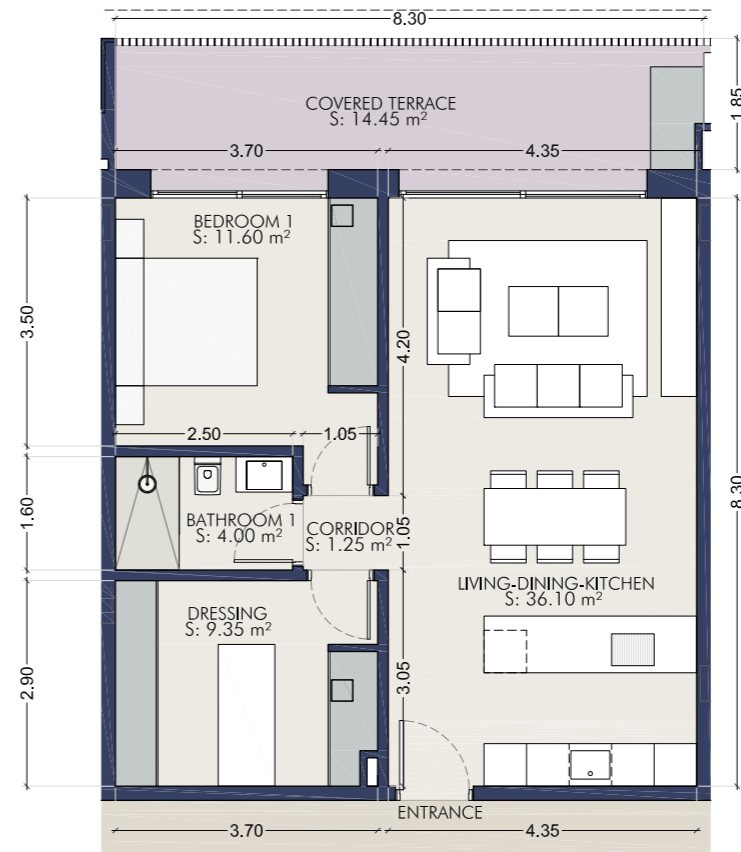


* NOTE: ONE PARKING SPACE INCLUDED



Ground Floor

| | |
|-----------------------------|----------------------------|
| Internal Built Area | 76,90 m ² |
| Internal Useful Area | 62,30 m ² |
| Covered Terrace Built Area | 15,55 m ² |
| Covered Terrace Useful Area | 14,45 m ² |
| TOTAL BUILT AREA | 92,45 m² |
| TOTAL USEFUL AREA | 76,75 m² |



Ground Floor