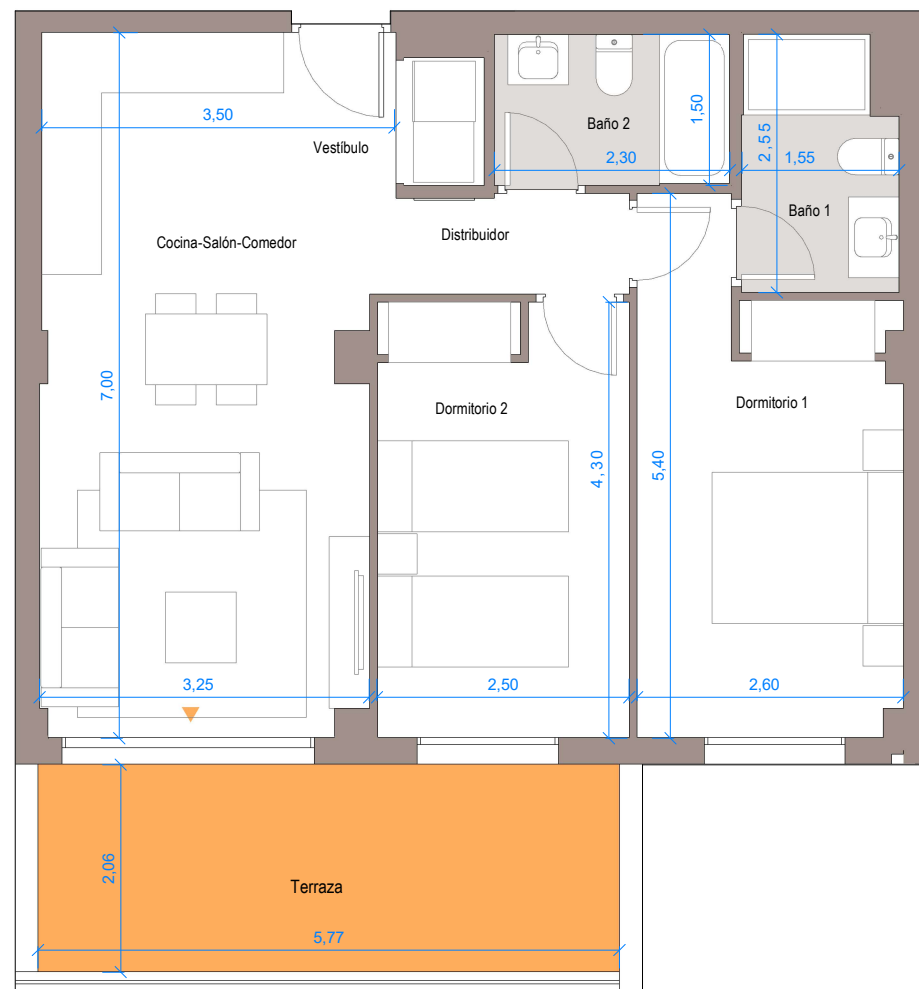


A schematic map of a residential area, likely a village or a specific neighborhood. The map shows several clusters of houses, each represented by a simple outline of a building. One house, located in the upper right quadrant, is highlighted in orange. A large, light-colored arrow points towards this orange house from the center of the map. In the top left corner, there is a small circle with a vertical line through it, possibly indicating a specific location or a point of interest. The entire map is enclosed within a wavy, irregular border.



Baño 1	3,70 m²
Baño 2	3,40 m²
Cocina-Salón-Comedor	21,30 m²
Distribuidor	2,20 m²
Dormitorio 1 Dormitorio 2	12,20 m²
Vestíbulo	10,70 m²
	2,90 m²
Terraza	12,30 m²

Superficie útil de vivienda	56,40 m <sup>2</sup>
Sup. útil vivienda s/DJA 218/2005	62,04 m <sup>2</sup>
Superficie construida de vivienda	65,00 m <sup>2</sup>
Superficie construida c.c. de vivienda	78,00 m <sup>2</sup>
Superficie construida s/DJA 218/2002	85,88 m <sup>2</sup>



Nº Edición: V 1.0  
Fecha: NOVIEMBRE 2025